

Single Compression Cable Gland



INDOOR CABLE GLAND FOR ARMoured / UNARMoured CABLES

Technical Data:

Ref. Standard : IS 12943 - 1990

MOC : Brass
(Al / SS / MS available on request)

Finish : Nickel Plated
(Tin / Cadmium / Chrome plating available on request)

Entry Thread : BS Con (British Standard Conduit thread)
(Metric / NPT available on request)

Application:

For use under normal climatic conditions. These are weather proof & can be used in other areas when protected by a shroud.

Assembly Parts:

1. Check Nut 2. Gland Body 3. Metal Washers (x3) 4. Seal 5. Compression Nut. All metal parts are made of Brass except the metal washers, which are made of M.S.

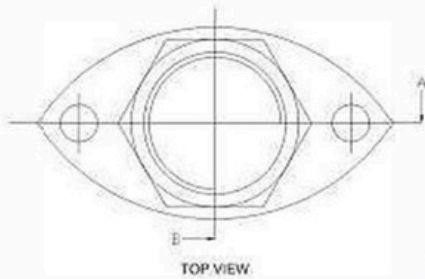
Extra Accessories:

PVC Shroud, Earth Tag, Stopping Plug, Reducer / Adaptor available separately upon request.

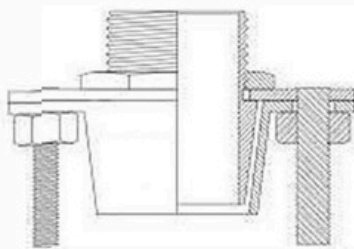
How to install ?

- Pass part # 5, 3 (x1) & 4 in sequence over the cable before commencing to strip the outer sheath.
- Remove the outer sheath to the desired length.
- Pass part # 3 (x1) over the cable having armour exposed. Then, splay out the armour & bend it & cut the excess armour to match with the size of washer.
- Pass another part # 3 (x1) over the inner sheath of cable in such a way that the bent armour gets secured between the two metal washers.
- Pass this assembly through part # 2 & screw part # 5 in to part # 2 partially.
- Now, screw entire assembly into the enclosure (in case of thread less entry hole, use part # 1 to secure the connection with the enclosure).
- Finally, screw part # 5 in to part # 2 fully, by application of suitable torque, which will result in the contraction of part # 4 in the radial direction & thereby, grips the cable.

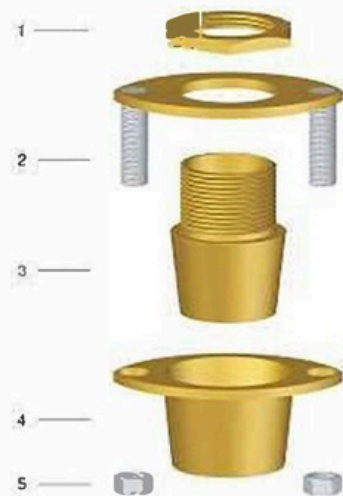
Flange Type Cable Gland



TOP VIEW



SECTION 'A-A'



INDOOR / OUTDOOR CABLE GLAND FOR ARMoured CABLES

Technical Data:

MOC : Brass
Finish : Natural
Entry Thread : BS Con (British Standard Conduit thread)

Application:

For use under normal dry climatic conditions.

Assembly Parts:

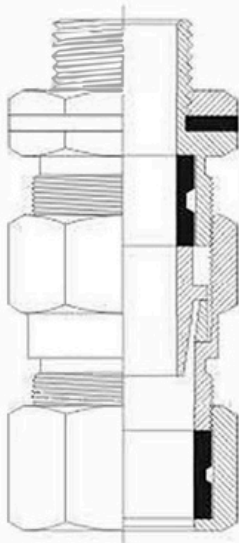
1. Check Nut 2. Gland Plate with Studs 3. Gland Inner Body
4. Gland Outer Body 5. Nut (x2)

All metal parts are made of Brass except the studs & nuts, which are made of M.S.

How to install ?

- Pass part # 3 into the part # 2 & then screw part # 3 into the apparatus (In case of thread less entry hole, use part # 1 to secure connection of part # 3 with apparatus)
- Remove the outer sheath of cable so as to get the desired length of armour exposed.
- Pass part # 4 over the cable having exposed armour. Spaly out the armour & bend it on the flanged part of the gland outer body.
- Pass the inner sheath of cable into part # 3 & fix part # 4 onto part # 3 so as to get the armour secured between the gland plate & flanged part of the gland outer body.
- Finally, engage part # 5 (x2) with the studs of part # 2 & tighten them so as to get the armour perfectly gripped between the gland outer body & gland plate.

Weather Proof Double Compression Cable Gland



INDOOR / OUTDOOR CABLE GLAND FOR ARMoured / UNARMoured CABLES

Technical Data:

Ref. Standard : IS 12063 - 1987 / IEC 60529 : 1989, BS 6121

MOC : Gland - Brass
(Al / SS / MS available on request)
Seals - Neoprene

Finish : Nickel Plated (Tin / Cadmium / Chrome plating available on request)

Entry Thread : BS Con (British Standard Conduit thread)
(Metric / PG / NPT / BSP available on request)

IP Rating : IP 65

Application:

For use in safe area. These are water proof & dust proof (IP 65) & can be used in corrosive conditions when protected by a shroud.

Approvals: CIMFR (formerly CMRI) Dhanbad

Assembly Parts:

1. Check Nut 2. Flat Washer 3. Gland Nipple 4. Inner Sheath Seal 5. Armour Clamping Cone 6. Armour Clamping Ring 7. Gland Body 8. Outer Sheath Seal 9. Compression Cap. All metal parts are made of Brass.

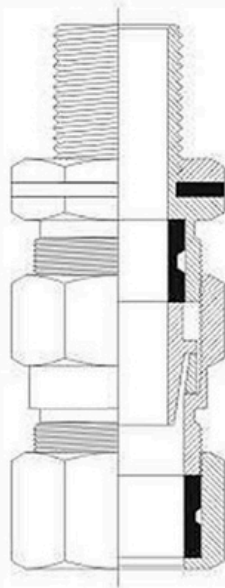
Extra Accessories:

PVC Shroud, Earth Tag, Stopping Plug, Reducer / Adaptor available separately upon request.

How to install ?

- Pass part # 9, 8 & 7 in sequence over the cable before commencing to strip the outer sheath. Screw part # 7 into part # 9 partially.
- Remove the outer sheath of cable to the desired length & pass part # 6 over the exposed armour. Splay out the armour & cut the excess part of it.
- Pass part # 5 over the exposed inner sheath so as to get the armour secured between part # 5 & 6.
- Pass part # 4, 3 & 2 in sequence over the inner sheath of cable & screw part # 3 into part # 7 partially.
- Now screw this assembly into the apparatus (in case of thread less entry hole, use part # 1 to secure connection of gland assembly with the apparatus).
- Now, apply suitable torque to tighten part # 7 fully, which will result in contraction of part # 4 in radial direction & thereby, grip the inner sheath of cable. At the same time the armour will be perfectly gripped between part # 5 & 6.
- Finally, screw part # 9 fully by application of suitable torque, which will result in contraction of part # 8 in radial direction & thereby, grip the outer sheath of cable.

Flame Proof Double Compression Cable Gland



INDOOR / OUTDOOR CABLE GLAND FOR ARMoured / UNARMoured CABLES

Technical Data:

Ref. Standard : IS 2148 - 1981 / IEC60079-1:2007

MOC : Gland - Brass
(Al / SS / MS available on request)
Seals - Neoprene

Finish : Nickel Plated (Tin / Cadmium / Chrome plating available on request)

Entry Thread : BS Con (British Standard Conduit thread)
(Metric / PG / NPT / BSP available on request)

IP Rating : IP 65

Application:

For use in hazardous atmosphere (gas group I, IIA & IIB) & most climatic conditions. Flame proof glands are water proof & dust proof (IP 65) & may be used in corrosive conditions when protected by a shroud.

Approvals: CIMFR (formerly CMRI) Dhanbad

Assembly Parts:

1. Check Nut 2. Flat Washer 3. Gland Nipple 4. Inner Sheath Seal 5. Armour Clamping Cone 6. Armour Clamping Ring 7. Gland Body 8. Outer Sheath Seal 9. Compression Cap. All metal parts are made of Brass.

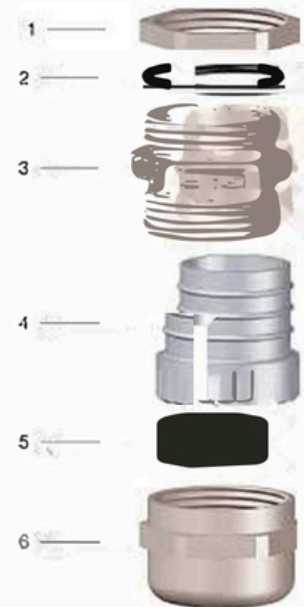
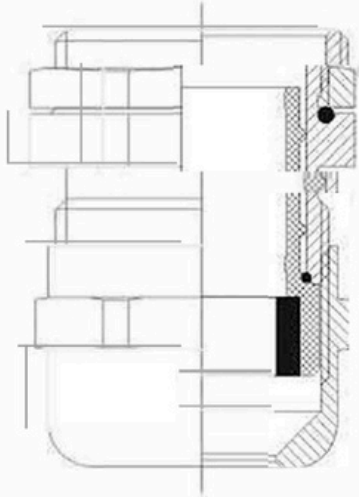
Extra Accessories:

PVC Shroud, Earth Tag, Stopping Plug, Reducer / Adaptor available separately upon request.

How to install ?

- Pass part # 9, 8 & 7 in sequence over the cable before commencing to strip the outer sheath. Screw part # 7 into part # 9 partially.
- Remove the outer sheath of cable to the desired length & pass part # 6 over the exposed armour. Splay out the armour & cut the excess part off it.
- Pass part # 5 over the exposed inner sheath so as to get the armour secured between part # 5 & 6.
- Pass part # 4, 3 & 2 in sequence over the inner sheath of cable & screw part # 3 into part # 7 partially.
- Now screw this assembly into the apparatus (in case of thread less entry hole, use part # 1 to secure connection of gland assembly with the apparatus).
- Now, apply suitable torque to tighten part # 7 fully, which will result in contraction of part # 4 in radial direction & thereby, grip the inner sheath of cable. At the same time the armour will be perfectly gripped between part # 5 & 6.
- Finally, screw part # 9 fully by application of suitable torque, which will result in contraction of part # 8 in radial direction & thereby, grip the outer sheath of cable.

IP 68 Cable Gland



INDOOR / OUTDOOR CABLE GLAND FOR FLEXIBLE CABLES

Technical Data:

Ref. Standard : EN 50262

MOC : Body, Lock Nut - Brass
 Insert - Polyamide 6
 Sealing Ring - Neoprene
 'O' Ring - Nitrile

Finish : Nickel Plated

Entry Thread : Metric
 (PG / BSP / NPT also available)

IP Rating : IP 68

Assembly Parts:

1. Check Nut 2. 'O' Ring 3. Gland Body 4. Clamping Insert 5. Seal 6. Gland Cap

Size	Cable Clamping Range	
	Min. (mm)	Max. (mm)
Pg 7	2.0	6.5
Pg 9	3.0	8.0
Pg 11	4.0	10.0
Pg 13.5	5.0	12.0
Pg 16	8.0	14.0
Pg 21	11.0	18.0
Pg 29	16.0	25.0
Pg 36	20.0	30.0
Pg 42	28.0	38.0
Pg 48	34.0	44.0

Application:

For use under most climatic conditions. These are water proof, dust proof & provide a high degree of resistance against strain, twist & vibration.

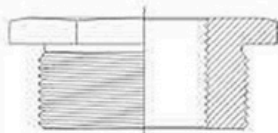
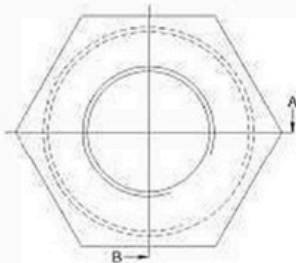
How to install?

- Pass the cable through part # 6, 5, 4, 3 & 2 in sequence.
- Screw part # 3 into the apparatus (in case of thread less entry hole, use part # 1 to secure connection of part # 3 with the apparatus).
- Push part # 4 into part # 3 & part # 5 in to part # 4.
- Finally, start screwing part # 6 onto part # 3, which will result in contraction of part # 4 & 5 in radial direction, thereby, gripping the cable firmly

Size	Cable Clamping Range	
	Min. (mm)	Max. (mm)
M12 x 1.5	2.0	6.5
M16 x 1.5	3.0	8.0
M20 x 1.5	5.0	12.0
M25 x 1.5	9.0	18.0
M32 x 1.5	12.0	21.0
M40 x 1.5	18.0	28.0
M50 x 1.5	26.0	36.0
M63 x 1.5	36.0	48.0
M75 x 1.5	48.0	63.0

Reducers

Weather Proof Reducer



SECTION 'A-B'



Technical Data:

Ref. Standard : IS 12063 - 1987 / IEC 60529 : 1989

MOC : Brass
(Al / SS / MS available on request)

Finish : Nickel Plated
(Tin / Cadmium / Chrome plating available on request)

Thread : BS Con (British Standard Conduit thread)
(Metric / PG / NPT / BSP available on request)

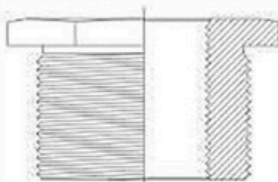
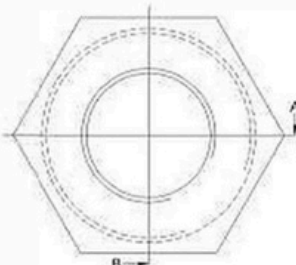
IP Rating : IP 65 when used with sealing ring.

Optional : Flat washer / 'O' ring

Application : For use in normal & safe area.

Function : A reducer helps the apparatus reduce its entry hole thread size, to accept particular entry thread of a gland.

Flame Proof Reducer



SECTION 'A-B'



Technical Data:

Ref. Standard : IS 2148 - 1981 / IEC 60079-1:2007

MOC : Brass
(Al / SS / MS available on request)

Finish : Nickel Plated
(Tin / Cadmium / Chrome plating available on request)

Thread : BS Con (British Standard Conduit thread)
(Metric / PG / NPT / BSP available on request)

IP Rating : IP 65 when used with sealing ring.

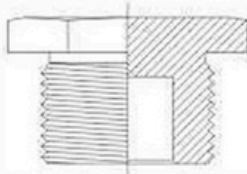
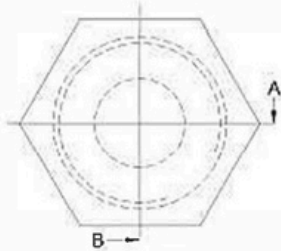
Optional : Flat washer / 'O' ring

Application : For use in hazardous atmosphere.

Function : A reducer helps the apparatus reduce its entry hole thread size, to accept particular entry thread of a gland.

Stopping Plugs

Weather Proof Stopping Plug



SECTION 'A-B'

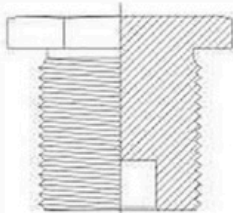
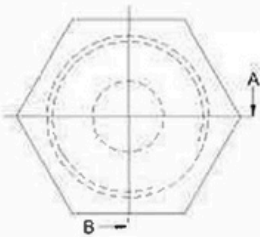


Technical Data:

Ref. Standard : IS 12063 - 1987 / IEC 60529 : 1989

MOC	: Brass (Al / SS / MS available on request)
Finish	: Nickel Plated (Tin / Cadmium / Chrome plating available on request)
Thread	: BS Con (British Standard Conduit thread) (Metric / PG / NPT / BSP available on request)
IP-Rating	: IP 65 when used with sealing ring.
Optional	: Flat washer / 'O' ring
Application	: For use in normal & safe area.
Function	: A stopping plug is used to terminate the unused cable entries of the apparatus.

Flame Proof Stopping Plug



SECTION 'A-B'



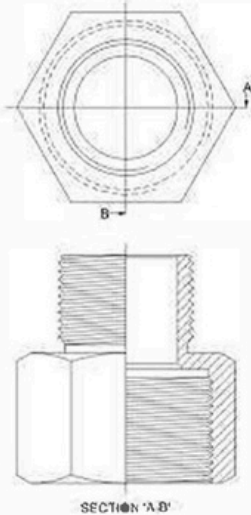
Technical Data:

Ref. Standard : IS 2148 - 1981 / IEC 60079-1:2007

MOC	: Brass (Al / SS / MS available on request)
Finish	: Nickel Plated (Tin / Cadmium / Chrome plating available on request)
Thread	: BS Con (British Standard Conduit thread) (Metric / PG / NPT / BSP available on request)
IP Rating	: IP 65 when used with sealing ring.
Optional	: Flat washer / 'O' ring
Application	: For use in hazardous atmosphere.
Function	: A stopping plug is used to terminate the unused cable entries of the apparatus.

Adaptor - Earth Tag - Shroud

Adaptor



Technical Data:

MOC	: Brass (Al / SS / MS available on request)
Finish	: Nickel Plated (Tin / Cadmium / Chrome plating available on request)
Thread	: BS Con (British Standard Conduit thread) (Metric / PG / NPT / BSP available on request)
IP Rating	: IP 65 when used with sealing ring.
Optional	: Flat washer / 'O' ring
Application	: For use in normal & safe area.
Function	: An adaptor helps the apparatus to adapt a particular entry thread of a gland.

Earth Tag



Technical Data:

MOC	: Brass (Al available on request)
Finish	: Natural (Nickel / Tin / Cadmium / Chrome plating available on request)
Application	: For providing earthing between the gland & apparatus.

Shroud



Technical Data:

MOC	: PVC (LSF available on request)
Application	: For protecting the gland against adverse weather conditions & corrosion.
Available for all type of glands.	

Gland Selection Chart

Cable Gland Selection based on Cable Overall Diameter

Single Compression Cable Glands	
Cable O.D. Range (mm)	Code
8.0 - 12.0	3/8"
12.5 - 15.5	1/2"
12.5 - 15.5	5/8"
16.0 - 18.0	3/4"
18.5 - 20.0	7/8"
20.5 - 23.5	1"
24.0 - 27.0	1.1/8"
27.5 - 30.0	1.1/4"
30.5 - 34.0	1.3/8"
34.5 - 38.0	1.1/2"
38.5 - 43.0	1.3/4"
43.5 - 50.0	2"
50.5 - 56.0	2.1/4"
56.5 - 60.0	2.1/2"
60.5 - 68.0	2.3/4"
68.5 - 74.0	3"
74.5 - 79.0	3.1/4"
79.5 - 83.0	3.1/2"
83.5 - 96.0	4"
96.5 - 104.0	4.1/2"

Double Compression Cable Glands	
Cable O.D. Range (mm)	Code
7.0 - 10.0	3/8"
10.5 - 15.5	1/2"
16.0 - 16.5	5/8"
17.0 - 18.5	3/4"
19.0 - 20.0	7/8"
20.5 - 23.5	1"
24.0 - 27.0	1.1/8"
27.5 - 31.0	1.1/4"
31.5 - 34.0	1.3/8"
34.5 - 38.0	1.1/2"
38.5 - 44.0	1.3/4"
44.5 - 50.0	2"
50.5 - 55.0	2.1/4"
55.5 - 61.0	2.1/2"
62.0 - 68.0	2.3/4"
68.5 - 73.0	3"
73.5 - 79.0	3.1/4"
79.5 - 84.0	3.1/2"
84.5 - 94.0	4"
94.5 - 104.0	4.1/2"

Flange Type Cable Glands	
Cable O.D. Range (mm)	Code
13.0 - 16.5	5
17.0 - 19.0	4
19.5 - 21.0	3
21.5 - 24.0	2
24.5 - 29.0	1
29.5 - 33.0	11
33.5 - 36.0	0
36.5 - 39.0	00
39.5 - 42.0	38
42.5 - 48.0	001
48.5 - 52.0	002
52.5 - 58.0	003
58.5 - 67.0	0033
67.5 - 77.0	004
77.5 - 86.5	005

Weather Proof / Flame Proof Double Comp. Cable Glands		
Cable O.D. Range (mm)	Weather Proof Code	Flame Proof Code
8.0 - 10.0	HMIW 01SS	HMIF 01SS
10.0 - 16.0	HMIW 01S	HMIF 01S
16.5 - 18.0	HMIW 01	HMIF 01
18.5 - 20.0	HMIW 02	HMIF 02
20.5 - 23.0	HMIW 03	HMIF 03
23.5 - 26.0	HMIW 04	HMIF 04
26.5 - 30.0	HMIW 05	HMIF 05
30.5 - 33.0	HMIW 06	HMIF 06
33.5 - 37.0	HMIW 07	HMIF 07
37.5 - 41.0	HMIW 08	HMIF 08
41.5 - 46.0	HMIW 09	HMIF 09
46.5 - 52.0	HMIW 010	HMIF 010
46.5 - 52.0	HMIW 011S	HMIF 011S
52.5 - 60.0	HMIW 011	HMIF 011
60.5 - 66.0	HMIW 012	HMIF 012
66.5 - 72.0	HMIW 013S	HMIF 013S
72.5 - 78.0	HMIW 013	HMIF 013
78.5 - 84.0	HMIW 014	HMIF 014
84.5 - 92.0	HMIW 015	HMIF 015
92.5 - 104.0	HMIW 016	HMIF 016

Gland Selection Chart

Cable Description		Single Compression		Flange Type		Double Compression				
# of Cores x Cross Sec. Area	Approx. O.D. (mm)	Code	Entry Thread (BS Con)	Code	Entry Thread (BS Con)	D.C. Type Code	Entry Thread for D.C. Type (BS Con)	Weather Proof (WP) Code	Flame Proof (FLP) Code	Entry Thread for WP/FLP (BS Con)
Tropodur Unarmoured Single Core Power Cables Type AYY & YY 1100 V										
1C x 1.5	7.0	3/8"	5/8"	-	-	3/8"	1/2"	HMIW 01SS	HMIF 01SS	3/4"
1C x 2.5	7.5	3/8"	5/8"	-	-	3/8"	1/2"	HMIW 01SS	HMIF 01SS	3/4"
1C x 4	8.0	3/8"	5/8"	-	-	3/8"	1/2"	HMIW 01SS	HMIF 01SS	3/4"
1C x 6	9.0	3/8"	5/8"	-	-	3/8"	1/2"	HMIW 01SS	HMIF 01SS	3/4"
1C x 10	10.0	3/8"	5/8"	-	-	1/2"	5/8"	HMIW 01SS	HMIF 01SS	3/4"
1C x 16	11.0	3/8"	5/8"	-	-	1/2"	5/8"	HMIW 01SS	HMIF 01SS	3/4"
1C x 25	12.5	1/2"	5/8"	-	-	1/2"	5/8"	HMIW 01S	HMIF 01S	3/4"
1C x 35	13.5	1/2"	5/8"	-	-	1/2"	5/8"	HMIW 01S	HMIF 01S	3/4"
1C x 50	15.0	3/4"	3/4"	-	-	3/4"	3/4"	HMIW 01S	HMIF 01S	3/4"
1C x 70	17.0	7/8"	3/4"	-	-	7/8"	3/4"	HMIW 01	HMIF 01	3/4"
1C x 95	19.0	7/8"	3/4"	-	-	1"	1"	HMIW 02	HMIF 02	1"
1C x 120	21.0	1"	1"	-	-	1"	1"	HMIW 03	HMIF 03	1"
1C x 150	22.5	1"	1"	-	-	1.1/8"	1.1/8"	HMIW 04	HMIF 04	1"
1C x 185	25.0	1.1/8"	1.1/8"	-	-	1.1/4"	1.1/4"	HMIW 05	HMIF 05	1.1/4"
1C x 240	28.0	1.1/4"	1.1/4"	-	-	1.1/4"	1.1/4"	HMIW 05	HMIF 05	1.1/4"
1C x 300	30.0	1.3/8"	1.3/8"	-	-	1.3/8"	1.1/2"	HMIW 06	HMIF 06	1.1/2"
1C x 400	34.0	1.1/2"	1.1/2"	-	-	1.1/2"	1.1/2"	HMIW 07	HMIF 07	1.1/2"
1C x 500	38.0	1.3/4"	1.3/4"	-	-	1.3/4"	2"	HMIW 08	HMIF 08	2"
1C x 630	43.0	2"	2"	-	-	2"	2"	HMIW 09	HMIF 09	2"
1C x 800	47.0	2"	2"	-	-	2.1/4"	2.1/4"	HMIW 010	HMIF 010	2"
1C x 1000	51.5	2.1/4"	2.1/4"	-	-	2.1/4"	2.1/4"	HMIW 011S	HMIF 011S	2.1/2"
Tropodur Armoured Single Core Power Cables Type AYWaY & YWaY 1100 V										
1C x 4	11.0	3/8"	5/8"	5	5/8"	1/2"	5/8"	HMIW 01SS	HMIF 01SS	3/4"
1C x 6	12.0	3/8"	5/8"	5	5/8"	1/2"	5/8"	HMIW 01SS	HMIF 01SS	3/4"
1C x 10	13.0	1/2"	5/8"	5	5/8"	1/2"	5/8"	HMIW 01S	HMIF 01S	3/4"
1C x 16	14.0	1/2"	5/8"	5	5/8"	1/2"	5/8"	HMIW 01S	HMIF 01S	3/4"
1C x 25	15.0	5/8"	3/4"	5	5/8"	1/2"	5/8"	HMIW 01S	HMIF 01S	3/4"
1C x 35	16.0	3/4"	3/4"	5	5/8"	5/8"	3/4"	HMIW 01S	HMIF 01S	3/4"
1C x 50	18.0	7/8"	3/4"	4	3/4"	3/4"	3/4"	HMIW 01	HMIF 01	3/4"
1C x 70	20.0	7/8"	3/4"	3	3/4"	1"	1"	HMIW 02	HMIF 02	1"
Tropodur Armoured Single Core Power Cables Type AYFaY & YFaY 1100 V										
1C x 95	21.0	1"	1"	3	3/4"	1"	1"	HMIW 03	HMIF 03	1"
1C x 120	22.0	1"	1"	2	1"	1"	1"	HMIW 03	HMIF 03	1"
1C x 150	24.0	1.1/8"	1.1/8"	2	1"	1.1/8"	1.1/8"	HMIW 04	HMIF 04	1"
1C x 185	26.0	1.1/8"	1.1/8"	2	1"	1.1/8"	1.1/8"	HMIW 04	HMIF 04	1"
1C x 240	29.0	1.1/4"	1.1/4"	1	1.1/4"	1.1/4"	1.1/4"	HMIW 05	HMIF 05	1.1/4"
1C x 300	32.0	1.3/8"	1.3/8"	11	1.1/4"	1.3/8"	1.1/2"	HMIW 06	HMIF 06	1.1/2"
1C x 400	36.0	1.1/2"	1.1/2"	0	1.1/2"	1.1/2"	1.1/2"	HMIW 07	HMIF 07	1.1/2"
1C x 500	40.0	1.3/4"	1.3/4"	38	M40	1.3/4"	2"	HMIW 08	HMIF 08	2"
1C x 630	44.0	2"	2"	001	1.3/4"	2"	2"	HMIW 09	HMIF 09	2"

Gland Selection Chart

Cable Description		Single Compression		Flange Type		Double Compression				
# of Cores x Cross Sec. Area	Approx. O.D. (mm)	Code	Entry Thread (BS Con)	Code	Entry Thread (BS Con)	D.C. Type Code	Entry Thread for D.C. Type (BS Con)	Weather Proof (WP) Code	Flame Proof (FLP) Code	Entry Thread for WP/FLP (BS Con)
Tropodur Armoured Single Core Power Cables Type AYFaY & YFaY 1100 V										
1C x 800	48.0	2"	2"	002	2.1/8"	2.1/4"	2.1/4"	HMIW 010	HMIF 010	2"
1C x 1000	53.0	2.1/4"	2.1/4"	003	2.1/4"	2.1/4"	2.1/4"	HMIW 011S	HMIF 011S	2.1/2"
Tropodur Unarmoured Twin Core Power Cables Type AYY & YY 1100 V										
2C x 1.5	11.0	3/8"	5/8"	-	-	1/2"	5/8"	HMIW 015S	HMIF 015S	3/4"
2C x 2.5	12.0	1/2"	5/8"	-	-	1/2"	5/8"	HMIW 015	HMIF 015	3/4"
2C x 4	13.5	1/2"	5/8"	-	-	1/2"	5/8"	HMIW 015	HMIF 015	3/4"
2C x 6	14.5	3/4"	3/4"	-	-	5/8"	3/4"	HMIW 015	HMIF 015	3/4"
2C x 10	16.0	3/4"	3/4"	-	-	3/4"	3/4"	HMIW 01	HMIF 01	3/4"
2C x 16	17.5	7/8"	3/4"	-	-	7/8"	3/4"	HMIW 01	HMIF 01	3/4"
2C x 25	19.5	1"	1"	-	-	1"	1"	HMIW 03	HMIF 03	1"
2C x 35	20.5	1"	1"	-	-	1"	1"	HMIW 03	HMIF 03	1"
2C x 50	24.0	1.1/8"	1.1/8"	-	-	1.1/8"	1.1/8"	HMIW 04	HMIF 04	1"
2C x 70	27.0	1.1/4"	1.1/4"	-	-	1.1/4"	1.1/4"	HMIW 05	HMIF 05	1.1/4"
2C x 95	28.5	1.1/4"	1.1/4"	-	-	1.3/8"	1.1/2"	HMIW 05	HMIF 05	1.1/4"
2C x 120	33.0	1.1/2"	1.1/2"	-	-	1.1/2"	1.1/2"	HMIW 07	HMIF 07	1.1/2"
2C x 150	34.0	1.1/2"	1.1/2"	-	-	1.1/2"	1.1/2"	HMIW 07	HMIF 07	1.1/2"
2C x 185	37.0	1.3/4"	1.3/4"	-	-	1.3/4"	2"	HMIW 08	HMIF 08	2"
2C x 240	42.5	1.3/4"	1.3/4"	-	-	2"	2"	HMIW 09	HMIF 09	2"
2C x 300	45.5	2"	2"	-	-	2"	2"	HMIW 010	HMIF 010	2"
2C x 400	51.5	2.1/4"	2.1/4"	-	-	2.1/4"	2.1/4"	HMIW 011S	HMIF 011S	2.1/2"
2C x 500	57.0	2.1/2"	2.1/2"	-	-	2.1/2"	2.1/2"	HMIW 011	HMIF 011	2.1/2"
Tropodur Armoured Twin Core Power Cables Type AYWY & YWY 1100 V										
2C x 1.5	12.5	1/2"	5/8"	5	5/8"	1/2"	5/8"	HMIW 015S	HMIF 015S	3/4"
2C x 2.5	13.5	1/2"	5/8"	5	5/8"	1/2"	5/8"	HMIW 015	HMIF 015	3/4"
2C x 4	15.0	5/8"	3/4"	5	5/8"	1/2"	5/8"	HMIW 015	HMIF 015	3/4"
2C x 6	16.0	3/4"	3/4"	5	5/8"	5/8"	3/4"	HMIW 015	HMIF 015	3/4"
2C x 10	18.0	7/8"	3/4"	4	3/4"	3/4"	3/4"	HMIW 01	HMIF 01	3/4"
Tropodur Armoured Twin Core Power Cables Type AYFY & YFY 1100 V										
2C x 16	18.0	7/8"	3/4"	4	3/4"	3/4"	3/4"	HMIW 01	HMIF 01	3/4"
2C x 25	20.0	7/8"	3/4"	3	3/4"	1"	1"	HMIW 02	HMIF 02	1"
2C x 35	21.5	1"	1"	2	1"	1"	1"	HMIW 03	HMIF 03	1"
2C x 50	24.5	1.1/8"	1.1/8"	2	1"	1.1/8"	1.1/8"	HMIW 04	HMIF 04	1"
2C x 70	28.0	1.1/4"	1.1/4"	1	1.1/4"	1.1/4"	1.1/4"	HMIW 05	HMIF 05	1.1/4"
2C x 95	31.0	1.3/8"	1.3/8"	11	1.1/4"	1.3/8"	1.1/2"	HMIW 06	HMIF 06	1.1/2"
2C x 120	33.0	1.3/8"	1.3/8"	11	1.1/4"	1.3/8"	1.1/2"	HMIW 06	HMIF 06	1.1/2"
2C x 150	37.0	1.1/2"	1.1/2"	0	1.1/2"	1.3/4"	2"	HMIW 07	HMIF 07	1.1/2"
2C x 185	40.5	1.3/4"	1.3/4"	38	M40	1.3/4"	2"	HMIW 08	HMIF 08	2"
2C x 240	45.0	2"	2"	001	1.3/4"	2"	2"	HMIW 09	HMIF 09	2"
2C x 300	50.0	2"	2"	002	2.1/8"	2.1/4"	2.1/4"	HMIW 010	HMIF 010	2"
2C x 400	56.0	2.1/4"	2.1/4"	003	2.1/4"	2.1/2"	2.1/2"	HMIW 011	HMIF 011	2.1/2"

Gland Selection Chart

Cable Description		Single Compression		Flange Type		Double Compression				
# of Cores x Cross Sec. Area	Approx. O.D. (mm)	Code	Entry Thread (BS Con)	Code	Entry Thread (BS Con)	D.C. Type Code	Entry Thread for D.C. Type (BS Con)	Weather Proof (WP) Code	Flame Proof (FLP) Code	Entry Thread for WP/FLP (BS Con)
Tropodur Armoured Twin Core Power Cables Type AYFY & YFY 1100 V										
2C x 500	62.5	2.3/4"	2.3/4"	0033	2.1/2"	2.3/4"	2.3/4"	HMIW 012	HMIF 012	3"
Tropodur Unarmoured Three Core Power Cables Type AYY & YY 1100 V										
3C x 1.5	11.5	1/2"	5/8"	5	5/8"	1/2"	5/8"	HMIW 01SS	HMIF 01SS	3/4"
3C x 2.5	12.5	1/2"	5/8"	5	5/8"	1/2"	5/8"	HMIW 01S	HMIF 01S	3/4"
3C x 4	13.5	1/2"	5/8"	5	5/8"	1/2"	5/8"	HMIW 01S	HMIF 01S	3/4"
3C x 6	15.0	3/4"	3/4"	5	5/8"	3/4"	3/4"	HMIW 01S	HMIF 01S	3/4"
3C x 10	16.5	3/4"	3/4"	5	5/8"	3/4"	3/4"	HMIW 01	HMIF 01	3/4"
3C x 16	17.5	7/8"	3/4"	4	3/4"	7/8"	3/4"	HMIW 01	HMIF 01	3/4"
3C x 25	22.0	1"	1"	2	1"	1"	1"	HMIW 03	HMIF 03	1"
3C x 35	23.0	1.1/8"	1.1/8"	2	1"	1.1/8"	1.1/8"	HMIW 04	HMIF 04	1"
3C x 50	27.0	1.1/4"	1.1/4"	1	1.1/4"	1.1/4"	1.1/4"	HMIW 05	HMIF 05	1.1/4"
3C x 70	31.0	1.3/8"	1.3/8"	11	1.1/4"	1.3/8"	1.1/2"	HMIW 06	HMIF 06	1.1/2"
3C x 95	33.0	1.1/2"	1.1/2"	11	1.1/4"	1.1/2"	1.1/2"	HMIW 07	HMIF 07	1.1/2"
3C x 120	36.0	1.1/2"	1.1/2"	0	1.1/2"	1.3/4"	2"	HMIW 08	HMIF 08	2"
3C x 150	41.0	1.3/4"	1.3/4"	38	M40	1.3/4"	2"	HMIW 09	HMIF 09	2"
3C x 185	45.0	2"	2"	001	1.3/4"	2"	2"	HMIW 010	HMIF 010	2"
3C x 240	50.0	2.1/4"	2.1/4"	002	2.1/8"	2.1/4"	2.1/4"	HMIW 010	HMIF 010	2"
3C x 300	55.5	2.1/2"	2.1/2"	003	2.1/4"	2.1/2"	2.1/2"	HMIW 011	HMIF 011	2.1/2"
3C x 400	63.5	2.3/4"	2.3/4"	0033	2.1/2"	2.3/4"	2.3/4"	HMIW 012	HMIF 012	3"
3C x 500	71.0	3"	3"	004	3"	3.1/4"	3.1/4"	HMIW 013	HMIF 013	3.1/4"
Tropodur Armoured Three Core Power Cables Type AYWY & YWY 1100 V										
3C x 1.5	12.5	1/2"	5/8"	5	5/8"	1/2"	5/8"	HMIW 01SS	HMIF 01SS	3/4"
3C x 2.5	14.0	1/2"	5/8"	5	5/8"	1/2"	5/8"	HMIW 01S	HMIF 01S	3/4"
3C x 4	15.5	3/4"	3/4"	5	5/8"	5/8"	3/4"	HMIW 01S	HMIF 01S	3/4"
3C x 6	17.0	3/4"	3/4"	4	3/4"	3/4"	3/4"	HMIW 01	HMIF 01	3/4"
3C x 10	19.0	7/8"	3/4"	4	3/4"	7/8"	3/4"	HMIW 02	HMIF 02	1"
Tropodur Armoured Three Core Power Cables Type AYFY & YFY 1100 V										
3C x 16	20.0	7/8"	3/4"	3	3/4"	1"	1"	HMIW 02	HMIF 02	1"
3C x 25	22.0	1"	1"	2	1"	1"	1"	HMIW 03	HMIF 03	1"
3C x 35	25.0	1.1/8"	1.1/8"	2	1"	1.1/8"	1.1/8"	HMIW 04	HMIF 04	1"
3C x 50	27.0	1.1/8"	1.1/8"	1	1.1/4"	1.1/4"	1.1/4"	HMIW 05	HMIF 05	1.1/4"
3C x 70	31.0	1.3/8"	1.3/8"	11	1.1/4"	1.3/8"	1.1/2"	HMIW 06	HMIF 06	1.1/2"
3C x 95	34.0	1.1/2"	1.1/2"	0	1.1/2"	1.1/2"	1.1/2"	HMIW 07	HMIF 07	1.1/2"
3C x 120	38.0	1.1/2"	1.1/2"	00	1.1/2"	1.3/4"	2"	HMIW 08	HMIF 08	2"
3C x 150	42.0	1.3/4"	1.3/4"	001	1.3/4"	2"	2"	HMIW 08	HMIF 08	2"
3C x 185	46.0	2"	2"	001	1.3/4"	2"	2"	HMIW 09	HMIF 09	2"
3C x 240	52.0	2.1/4"	2.1/4"	002	2.1/8"	2.1/4"	2.1/4"	HMIW 010	HMIF 010	2"
3C x 300	56.5	2.1/2"	2.1/2"	003	2.1/4"	2.1/2"	2.1/2"	HMIW 011	HMIF 011	2.1/2"
3C x 400	64.0	2.3/4"	2.3/4"	0033	2.1/2"	2.3/4"	2.3/4"	HMIW 012	HMIF 012	3"
3C x 500	72.0	3"	3"	004	3"	3"	3"	HMIW 013S	HMIF 013S	3"

Gland Selection Chart

Cable Description		Single Compression		Flange Type		Double Compression				
# of Cores x Cross Sec. Area	Approx. O.D. (mm)	Code	Entry Thread (BS Con)	Code	Entry Thread (BS Con)	D.C. Type Code	Entry Thread for D.C. Type (BS Con)	Weather Proof (WP) Code	Flame Proof (FLP) Code	Entry Thread for WP/FLP (BS Con)
Tropodur Unarmoured Three & Half Core Power Cables Type AYY & YY 1100 V										
3.5C x 25/16	22.5	1"	1"	-	-	1.1/8"	1.1/8"	HMIW 04	HMIF 04	1"
3.5C x 35/16	25.0	1.1/8"	1.1/8"	-	-	1.1/4"	1.1/4"	HMIW 05	HMIF 05	1.1/4"
3.5C x 50/25	29.0	1.1/4"	1.1/4"	-	-	1.3/8"	1.1/2"	HMIW 06	HMIF 06	1.1/2"
3.5C x 70/35	33.0	1.1/2"	1.1/2"	-	-	1.1/2"	1.1/2"	HMIW 07	HMIF 07	1.1/2"
3.5C x 95/50	36.5	1.1/2"	1.1/2"	-	-	1.3/4"	2"	HMIW 08	HMIF 08	2"
3.5C x 120/70	39.0	1.3/4"	1.3/4"	-	-	1.3/4"	2"	HMIW 08	HMIF 08	2"
3.5C x 150/70	42.5	1.3/4"	1.3/4"	-	-	2"	2"	HMIW 09	HMIF 09	2"
3.5C x 185/95	47.0	2"	2"	-	-	2.1/4"	2.1/4"	HMIW 010	HMIF 010	2"
3.5C x 240/120	54.0	2.1/4"	2.1/4"	-	-	2.1/2"	2.1/2"	HMIW 011	HMIF 011	2.1/2"
3.5C x 300/150	58.0	2.1/2"	2.1/2"	-	-	2.1/2"	2.1/2"	HMIW 011	HMIF 011	2.1/2"
3.5C x 400/185	65.0	2.3/4"	2.3/4"	-	-	2.3/4"	2.3/4"	HMIW 0135	HMIF 0135	3"
3.5C x 500/240	74.0	3.1/4"	3.1/4"	-	-	3.1/4"	3.1/4"	HMIW 013	HMIF 013	3.1/4"
Tropodur Armoured Three & Half Core Power Cables Type AYFY & YFY 1100 V										
3.5C x 25/16	23.5	1.1/8"	1.1/8"	2	1"	1.1/8"	1.1/8"	HMIW 04	HMIF 04	1"
3.5C x 35/16	26.0	1.1/8"	1.1/8"	2	1"	1.1/8"	1.1/8"	HMIW 04	HMIF 04	1"
3.5C x 50/25	30.0	1.1/4"	1.1/4"	1	1.1/4"	1.1/4"	1.1/4"	HMIW 05	HMIF 05	1.1/4"
3.5C x 70/35	32.5	1.3/8"	1.3/8"	11	1.1/4"	1.3/8"	1.1/2"	HMIW 06	HMIF 06	1.1/2"
3.5C x 95/50	36.5	1.1/2"	1.1/2"	0	1.1/2"	1.3/4"	2"	HMIW 07	HMIF 07	1.1/2"
3.5C x 120/70	40.5	1.3/4"	1.3/4"	38	M40	1.3/4"	2"	HMIW 08	HMIF 08	2"
3.5C x 150/70	44.0	2"	2"	001	1.3/4"	2"	2"	HMIW 09	HMIF 09	2"
3.5C x 185/95	50.0	2"	2"	002	2.1/8"	2.1/4"	2.1/4"	HMIW 010	HMIF 010	2"
3.5C x 240/120	55.0	2.1/4"	2.1/4"	003	2.1/4"	2.1/2"	2.1/2"	HMIW 011	HMIF 011	2.1/2"
3.5C x 300/150	61.0	2.3/4"	2.3/4"	0033	2.1/2"	2.3/4"	2.3/4"	HMIW 012	HMIF 012	3"
3.5C x 400/185	68.0	2.3/4"	2.3/4"	004	3"	2.3/4"	2.3/4"	HMIW 0135	HMIF 0135	3"
3.5C x 500/240	75.0	3.1/4"	3.1/4"	005	3.3/8"	3.1/4"	3.1/4"	HMIW 013	HMIF 013	3.1/4"
Tropodur Unarmoured Four Core Power Cables Type AYY & YY 1100 V										
4C x 1.5	12.5	1/2"	5/8"	-	-	1/2"	5/8"	HMIW 015	HMIF 015	3/4"
4C x 2.5	14.0	5/8"	3/4"	-	-	5/8"	3/4"	HMIW 015	HMIF 015	3/4"
4C x 4	15.5	3/4"	3/4"	-	-	3/4"	3/4"	HMIW 01	HMIF 01	3/4"
4C x 6	17.0	7/8"	3/4"	-	-	7/8"	3/4"	HMIW 01	HMIF 01	3/4"
4C x 10	19.0	7/8"	3/4"	-	-	1"	1"	HMIW 02	HMIF 02	1"
4C x 16	21.5	1"	1"	-	-	1"	1"	HMIW 03	HMIF 03	1"
4C x 25	24.0	1.1/8"	1.1/8"	-	-	1.1/8"	1.1/8"	HMIW 04	HMIF 04	1"
4C x 35	26.5	1.1/4"	1.1/4"	-	-	1.1/4"	1.1/4"	HMIW 05	HMIF 05	1.1/4"
4C x 50	32.5	1.1/2"	1.1/2"	-	-	1.1/2"	1.1/2"	HMIW 07	HMIF 07	1.1/2"
4C x 70	33.5	1.1/2"	1.1/2"	-	-	1.1/2"	1.1/2"	HMIW 07	HMIF 07	1.1/2"
4C x 95	38.5	1.3/4"	1.3/4"	-	-	1.3/4"	2"	HMIW 08	HMIF 08	2"
4C x 120	41.5	1.3/4"	1.3/4"	-	-	2"	2"	HMIW 09	HMIF 09	2"
4C x 150	46.0	2"	2"	-	-	2"	2"	HMIW 010	HMIF 010	2"
4C x 185	50.5	2.1/4"	2.1/4"	-	-	2.1/4"	2.1/4"	HMIW 010	HMIF 010	2"

Gland Selection Chart

Cable Description		Single Compression		Flange Type		Double Compression				
# of Cores x Cross Sec. Area	Approx. O.D. (mm)	Code	Entry Thread (BS Con)	Code	Entry Thread (BS Con)	D.C. Type Code	Entry Thread for D.C. Type (BS Con)	Weather Proof (WP) Code	Flame Proof (FLP) Code	Entry Thread for WP/FLP (BS Con)
Tropodur Unarmoured Four Core Power Cables Type AYY & YY 1100 V										
4C x 240	58.0	2.1/2"	2.1/2"	-	-	2.1/2"	2.1/2"	HMIW 011	HMIF 011	2.1/2"
4C x 300	64.0	2.3/4"	2.3/4"	-	-	2.3/4"	2.3/4"	HMIW 012	HMIF 012	3"
4C x 400	72.0	3"	3"	-	-	3.1/4"	3.1/4"	HMIW 013	HMIF 013	3.1/4"
4C x 500	80.0	3.1/2"	3.1/2"	-	-	3.1/2"	3.1/2"	HMIW 014	HMIF 014	3.1/2"
Tropodur Armoured Four Core Power Cables Type AYWY & YWY 1100 V										
4C x 1.5	15.0	5/8"	3/4"	5	5/8"	1/2"	5/8"	HMIW 01S	HMIF 01S	3/4"
4C x 2.5	16.5	3/4"	3/4"	5	5/8"	3/4"	3/4"	HMIW 01S	HMIF 01S	3/4"
4C x 4	18.0	7/8"	3/4"	4	3/4"	3/4"	3/4"	HMIW 01	HMIF 01	3/4"
4C x 6	19.5	7/8"	3/4"	3	3/4"	1"	1"	HMIW 02	HMIF 02	1"
Tropodur Armoured Four Core Power Cables Type AYFY & YFY 1100 V										
4C x 10	20.0	7/8"	3/4"	3	3/4"	1"	1"	HMIW 02	HMIF 02	1"
4C x 16	23.0	1"	1"	2	1"	1"	1"	HMIW 03	HMIF 03	1"
4C x 25	24.0	1.1/8"	1.1/8"	2	1"	1.1/8"	1.1/8"	HMIW 04	HMIF 04	1"
4C x 35	27.0	1.1/8"	1.1/8"	1	1.1/4"	1.1/4"	1.1/4"	HMIW 05	HMIF 05	1.1/4"
4C x 50	31.0	1.3/8"	1.3/8"	11	1.1/4"	1.3/8"	1.1/2"	HMIW 06	HMIF 06	1.1/2"
4C x 70	35.0	1.1/2"	1.1/2"	0	1.1/2"	1.1/2"	1.1/2"	HMIW 07	HMIF 07	1.1/2"
4C x 95	38.0	1.1/2"	1.1/2"	00	1.1/2"	1.3/4"	2"	HMIW 08	HMIF 08	2"
4C x 120	42.0	1.3/4"	1.3/4"	001	1.3/4"	1.3/4"	2"	HMIW 08	HMIF 08	2"
4C x 150	46.0	2"	2"	001	1.3/4"	2"	2"	HMIW 09	HMIF 09	2"
4C x 185	51.0	2.1/4"	2.1/4"	002	2.1/8"	2.1/4"	2.1/4"	HMIW 010	HMIF 010	2"
4C x 240	58.0	2.1/2"	2.1/2"	003	2.1/4"	2.1/2"	2.1/2"	HMIW 011	HMIF 011	2.1/2"
4C x 300	66.0	2.3/4"	2.3/4"	004	3"	2.3/4"	2.3/4"	HMIW 012	HMIF 012	3"
4C x 400	72.0	3"	3"	004	3"	3"	3"	HMIW 013S	HMIF 013S	3"
4C x 500	80.0	3.1/2"	3.1/2"	005	3.3/8"	3.1/2"	3.1/2"	HMIW 014	HMIF 014	3.1/2"
Tropodur Unarmoured Multi Core Control Cables Type YY 1100 V										
2C x 1.5	10.5	3/8"	5/8"	-	-	1/2"	5/8"	HMIW 01SS	HMIF 01SS	3/4"
3C x 1.5	11.0	3/8"	5/8"	-	-	1/2"	5/8"	HMIW 01SS	HMIF 01SS	3/4"
4C x 1.5	11.5	1/2"	5/8"	-	-	1/2"	5/8"	HMIW 01SS	HMIF 01SS	3/4"
5C x 1.5	12.5	1/2"	5/8"	-	-	1/2"	5/8"	HMIW 01S	HMIF 01S	3/4"
6C x 1.5	13.0	1/2"	5/8"	-	-	1/2"	5/8"	HMIW 01S	HMIF 01S	3/4"
7C x 1.5	13.5	1/2"	5/8"	-	-	1/2"	5/8"	HMIW 01S	HMIF 01S	3/4"
10C x 1.5	16.5	3/4"	3/4"	-	-	3/4"	3/4"	HMIW 01	HMIF 01	3/4"
12C x 1.5	17.5	7/8"	3/4"	-	-	7/8"	3/4"	HMIW 01	HMIF 01	3/4"
14C x 1.5	18.0	7/8"	3/4"	-	-	7/8"	3/4"	HMIW 02	HMIF 02	1"
16C x 1.5	19.5	1"	1"	-	-	1"	1"	HMIW 03	HMIF 03	1"
19C x 1.5	20.0	1"	1"	-	-	1"	1"	HMIW 03	HMIF 03	1"
24C x 1.5	23.0	1.1/8"	1.1/8"	-	-	1.1/8"	1.1/8"	HMIW 04	HMIF 04	1"
30C x 1.5	24.5	1.1/8"	1.1/8"	-	-	1.1/8"	1.1/8"	HMIW 04	HMIF 04	1"
37C x 1.5	26	1.1/8"	1.1/8"	-	-	1.1/4"	1.1/4"	HMIW 05	HMIF 05	1.1/4"
61C x 1.5	33.0	1.1/2"	1.1/2"	-	-	1.1/2"	1.1/2"	HMIW 07	HMIF 07	1.1/2"

Gland Selection Chart

Cable Description		Single Compression		Flange Type		Double Compression				
# of Cores x Cross Sec. Area	Approx. O.D. (mm)	Code	Entry Thread (BS Con)	Code	Entry Thread (BS Con)	D.C. Type Code	Entry Thread for D.C. Type (BS Con)	Weather Proof (WP) Code	Flame Proof (FLP) Code	Entry Thread for WP/FLP (BS Con)
Tropodur Unarmoured Multi Core Control Cables Type YY 1100 V										
2C x 2.5	11.0	3/8"	5/8"	-	-	1/2"	5/8"	HMIW 01SS	HMIF 01SS	3/4"
3C x 2.5	11.5	1/2"	5/8"	-	-	1/2"	5/8"	HMIW 01SS	HMIF 01SS	3/4"
4C x 2.5	11.5	1/2"	5/8"	-	-	1/2"	5/8"	HMIW 01SS	HMIF 01SS	3/4"
5C x 2.5	14.0	5/8"	3/4"	-	-	5/8"	3/4"	HMIW 01S	HMIF 01S	3/4"
6C x 2.5	15.5	3/4"	3/4"	-	-	3/4"	3/4"	HMIW 01	HMIF 01	3/4"
7C x 2.5	15.5	3/4"	3/4"	-	-	3/4"	3/4"	HMIW 01	HMIF 01	3/4"
10C x 2.5	19.0	7/8"	3/4"	-	-	1"	1"	HMIW 02	HMIF 02	1"
12C x 2.5	20.0	1"	1"	-	-	1"	1"	HMIW 03	HMIF 03	1"
14C x 2.5	21.0	1"	1"	-	-	1"	1"	HMIW 03	HMIF 03	1"
16C x 2.5	22.0	1"	1"	-	-	1"	1"	HMIW 03	HMIF 03	1"
19C x 2.5	23.0	1.1/8"	1.1/8"	-	-	1.1/8"	1.1/8"	HMIW 04	HMIF 04	1"
24C x 2.5	27.0	1.1/4"	1.1/4"	-	-	1.1/4"	1.1/4"	HMIW 05	HMIF 05	1.1/4"
30C x 2.5	28.5	1.1/4"	1.1/4"	-	-	1.3/8"	1.1/2"	HMIW 05	HMIF 05	1.1/4"
37C x 2.5	31.0	1.3/8"	1.3/8"	-	-	1.3/8"	1.1/2"	HMIW 06	HMIF 06	1.1/2"
61C x 2.5	38.5	1.3/4"	1.3/4"	-	-	1.3/4"	2"	HMIW 08	HMIF 08	2"
Tropodur Armoured Multi Core Control Cables Type YWY 1100 V										
2C x 1.5	13.5	1/2"	5/8"	5	5/8"	1/2"	5/8"	HMIW 01S	HMIF 01S	3/4"
3C x 1.5	14.0	1/2"	5/8"	5	5/8"	1/2"	5/8"	HMIW 01S	HMIF 01S	3/4"
4C x 1.5	15.0	5/8"	3/4"	5	5/8"	1/2"	5/8"	HMIW 01S	HMIF 01S	3/4"
5C x 1.5	15.5	3/4"	3/4"	5	5/8"	5/8"	3/4"	HMIW 01S	HMIF 01S	3/4"
6C x 1.5	16.0	3/4"	3/4"	5	5/8"	5/8"	3/4"	HMIW 01S	HMIF 01S	3/4"
7C x 1.5	16.5	3/4"	3/4"	5	5/8"	3/4"	3/4"	HMIW 01S	HMIF 01S	3/4"
10C x 1.5	19.0	7/8"	3/4"	4	3/4"	7/8"	3/4"	HMIW 02	HMIF 02	1"
2C x 2.5	14.5	1/2"	5/8"	5	5/8"	1/2"	5/8"	HMIW 01S	HMIF 01S	3/4"
3C x 2.5	15.5	3/4"	3/4"	5	5/8"	5/8"	3/4"	HMIW 01S	HMIF 01S	3/4"
4C x 2.5	16.5	3/4"	3/4"	5	5/8"	3/4"	3/4"	HMIW 01S	HMIF 01S	3/4"
5C x 2.5	17.5	3/4"	3/4"	4	3/4"	3/4"	3/4"	HMIW 01	HMIF 01	3/4"
6C x 2.5	18.5	7/8"	3/4"	4	3/4"	7/8"	3/4"	HMIW 01	HMIF 01	3/4"
7C x 2.5	18.5	7/8"	3/4"	4	3/4"	7/8"	3/4"	HMIW 01	HMIF 01	3/4"
Tropodur Armoured Multi Core Control Cables Type YFY 1100 V										
12C x 1.5	19.5	7/8"	3/4"	3	3/4"	1"	1"	HMIW 02	HMIF 02	1"
14C x 1.5	20.0	7/8"	3/4"	3	3/4"	1"	1"	HMIW 02	HMIF 02	1"
16C x 1.5	21.0	1"	1"	3	3/4"	1"	1"	HMIW 03	HMIF 03	1"
19C x 1.5	22.0	1"	1"	2	1"	1"	1"	HMIW 03	HMIF 03	1"
24C x 1.5	25.0	1.1/8"	1.1/8"	2	1"	1.1/8"	1.1/8"	HMIW 04	HMIF 04	1"
30C x 1.5	26.5	1.1/8"	1.1/8"	2	1"	1.1/4"	1.1/4"	HMIW 05	HMIF 05	1.1/4"
37C x 1.5	28.0	1.1/4"	1.1/4"	1	1.1/4"	1.1/4"	1.1/4"	HMIW 05	HMIF 05	1.1/4"
61C x 1.5	35.0	1.1/2"	1.1/2"	0	1.1/2"	1.1/2"	1.1/2"	HMIW 07	HMIF 07	1.1/2"
10C x 2.5	21.0	1"	1"	3	3/4"	1"	1"	HMIW 03	HMIF 03	1"
12C x 2.5	22.0	1"	1"	2	1"	1"	1"	HMIW 03	HMIF 03	1"

Gland Selection Chart

Cable Description		Single Compression		Flange Type		Double Compression				
# of Cores x Cross Sec. Area	Approx. O.D. (mm)	Code	Entry Thread (BS Con)	Code	Entry Thread (BS Con)	D.C. Type Code	Entry Thread for D.C. Type (BS Con)	Weather Proof (WP) Code	Flame Proof (FLP) Code	Entry Thread for WP/FLP (BS Con)
Tropodur Armoured Multi Core Control Cables Type YFY 1100 V										
14C x 2.5	23.0	1"	1"	2	1"	1"	1"	HMIW 03	HMIF 03	1"
16C x 2.5	24.0	1.1/8"	1.1/8"	2	1"	1.1/8"	1.1/8"	HMIW 04	HMIF 04	1"
19C x 2.5	25.0	1.1/8"	1.1/8"	2	1"	1.1/8"	1.1/8"	HMIW 04	HMIF 04	1"
24C x 2.5	29.0	1.1/4"	1.1/4"	1	1.1/4"	1.1/4"	1.1/4"	HMIW 05	HMIF 05	1.1/4"
30C x 2.5	30.5	1.3/8"	1.3/8"	1	1.1/4"	1.3/8"	1.1/2"	HMIW 06	HMIF 06	1.1/2"
37C x 2.5	33.0	1.3/8"	1.3/8"	11	1.1/4"	1.3/8"	1.1/2"	HMIW 06	HMIF 06	1.1/2"
61C x 2.5	41.0	1.3/4"	1.3/4"	38	M40	1.3/4"	2"	HMIW 08	HMIF 08	2"
XLPE Unarmoured Single Core Power Cables Type A2XY & 2XY 650 / 1100 V										
1C x 4	8.0	3/8"	5/8"	-	-	3/8"	1/2"	HMIW 01SS	HMIF 01SS	3/4"
1C x 6	8.5	3/8"	5/8"	-	-	3/8"	1/2"	HMIW 01SS	HMIF 01SS	3/4"
1C x 10	9.5	3/8"	5/8"	-	-	3/8"	1/2"	HMIW 01SS	HMIF 01SS	3/4"
1C x 16	10.0	3/8"	5/8"	-	-	1/2"	5/8"	HMIW 01SS	HMIF 01SS	3/4"
1C x 25	12.0	1/2"	5/8"	-	-	1/2"	5/8"	HMIW 01S	HMIF 01S	3/4"
1C x 35	13.0	1/2"	5/8"	-	-	1/2"	5/8"	HMIW 01S	HMIF 01S	3/4"
1C x 50	14.0	5/8"	3/4"	-	-	5/8"	3/4"	HMIW 01S	HMIF 01S	3/4"
1C x 70	16.0	3/4"	3/4"	-	-	3/4"	3/4"	HMIW 01	HMIF 01	3/4"
1C x 95	17.5	7/8"	3/4"	-	-	7/8"	3/4"	HMIW 01	HMIF 01	3/4"
1C x 120	19.0	7/8"	3/4"	-	-	1"	1"	HMIW 02	HMIF 02	1"
1C x 150	21.5	1"	1"	-	-	1"	1"	HMIW 03	HMIF 03	1"
1C x 185	23.5	1.1/8"	1.1/8"	-	-	1.1/8"	1.1/8"	HMIW 04	HMIF 04	1"
1C x 240	26.0	1.1/8"	1.1/8"	-	-	1.1/4"	1.1/4"	HMIW 05	HMIF 05	1.1/4"
1C x 300	28.5	1.1/4"	1.1/4"	-	-	1.3/8"	1.1/2"	HMIW 05	HMIF 05	1.1/4"
1C x 400	33.0	1.1/2"	1.1/2"	-	-	1.1/2"	1.1/2"	HMIW 07	HMIF 07	1.1/2"
1C x 500	36.0	1.1/2"	1.1/2"	-	-	1.3/4"	2"	HMIW 08	HMIF 08	2"
1C x 630	40.0	1.3/4"	1.3/4"	-	-	1.3/4"	2"	HMIW 08	HMIF 08	2"
1C x 800	46.0	2"	2"	-	-	2"	2"	HMIW 010	HMIF 010	2"
1C x 1000	52.0	2.1/4"	2.1/4"	-	-	2.1/4"	2.1/4"	HMIW 011S	HMIF 011S	2.1/2"
XLPE Armoured Single Core Power Cables Type A2XWY & 2XWY 650 / 1100 V										
1C x 10	12.0	3/8"	5/8"	5	5/8"	1/2"	5/8"	HMIW 01SS	HMIF 01SS	3/4"
1C x 16	13.0	1/2"	5/8"	5	5/8"	1/2"	5/8"	HMIW 01S	HMIF 01S	3/4"
1C x 25	14.0	1/2"	5/8"	5	5/8"	1/2"	5/8"	HMIW 01S	HMIF 01S	3/4"
1C x 35	16.0	3/4"	3/4"	5	5/8"	5/8"	3/4"	HMIW 01S	HMIF 01S	3/4"
1C x 50	17.0	3/4"	3/4"	4	3/4"	3/4"	3/4"	HMIW 01	HMIF 01	3/4"
1C x 70	19.0	7/8"	3/4"	4	3/4"	7/8"	3/4"	HMIW 02	HMIF 02	1"
1C x 95	22.0	1"	1"	2	1"	1"	1"	HMIW 03	HMIF 03	1"
1C x 120	23.5	1.1/8"	1.1/8"	2	1"	1.1/8"	1.1/8"	HMIW 04	HMIF 04	1"
1C x 150	24.5	1.1/8"	1.1/8"	2	1"	1.1/8"	1.1/8"	HMIW 04	HMIF 04	1"
1C x 185	26.5	1.1/8"	1.1/8"	2	1"	1.1/4"	1.1/4"	HMIW 05	HMIF 05	1.1/4"
1C x 240	29.0	1.1/4"	1.1/4"	1	1.1/4"	1.1/4"	1.1/4"	HMIW 05	HMIF 05	1.1/4"
1C x 300	31.5	1.3/8"	1.3/8"	11	1.1/4"	1.3/8"	1.1/2"	HMIW 06	HMIF 06	1.1/2"

Gland Selection Chart

Cable Description		Single Compression		Flange Type		Double Compression				
# of Cores x Cross Sec. Area	Approx. O.D. (mm)	Code	Entry Thread (BS Con)	Code	Entry Thread (BS Con)	D.C. Type Code	Entry Thread for D.C. Type (BS Con)	Weather Proof (WP) Code	Flame Proof (FLP) Code	Entry Thread for WP/FLP (BS Con)
XLPE Armoured Single Core Power Cables Type A2XWY & 2XWY 650 / 1100 V										
1C x 400	36.5	1.1/2"	1.1/2"	0	1.1/2"	1.3/4"	2"	HMIW 07	HMIF 07	1.1/2"
1C x 500	39.5	1.3/4"	1.3/4"	38	M40	1.3/4"	2"	HMIW 08	HMIF 08	2"
1C x 630	43.0	1.3/4"	1.3/4"	001	1.3/4"	1.3/4"	2"	HMIW 09	HMIF 09	2"
1C x 800	49.5	2"	2"	002	2.1/8"	2.1/4"	2.1/4"	HMIW 010	HMIF 010	2"
1C x 1000	58.0	2.1/2"	2.1/2"	003	2.1/4"	2.1/2"	2.1/2"	HMIW 011	HMIF 011	2.1/2"
XLPE Armoured Single Core Power Cables Type A2XFY & 2XFY 650 / 1100 V										
1C x 95	21.0	1"	1"	3	3/4"	1"	1"	HMIW 03	HMIF 03	1"
1C x 120	22.0	1"	1"	2	1"	1"	1"	HMIW 03	HMIF 03	1"
1C x 150	23.0	1"	1"	2	1"	1"	1"	HMIW 03	HMIF 03	1"
1C x 185	25.0	1.1/8"	1.1/8"	2	1"	1.1/8"	1.1/8"	HMIW 04	HMIF 04	1"
1C x 240	27.5	1.1/4"	1.1/4"	1	1.1/4"	1.1/4"	1.1/4"	HMIW 05	HMIF 05	1.1/4"
1C x 300	30.0	1.1/4"	1.1/4"	1	1.1/4"	1.1/4"	1.1/4"	HMIW 05	HMIF 05	1.1/4"
1C x 400	34.0	1.1/2"	1.1/2"	0	1.1/2"	1.1/2"	1.1/2"	HMIW 07	HMIF 07	1.1/2"
1C x 500	37.5	1.1/2"	1.1/2"	0	1.1/2"	1.3/4"	2"	HMIW 08	HMIF 08	2"
1C x 630	40.5	1.3/4"	1.3/4"	38	M40	1.3/4"	2"	HMIW 08	HMIF 08	2"
1C x 800	46.5	2"	2"	001	1.3/4"	2"	2"	HMIW 010	HMIF 010	2"
1C x 1000	54.0	2.1/4"	2.1/4"	003	2.1/4"	2.1/2"	2.1/2"	HMIW 011S	HMIF 011S	2.1/2"
XLPE Unarmoured Twin Core Power Cables Type A2XY & 2XY 650 / 1100 V										
2C x 4	13.0	1/2"	5/8"	-	-	1/2"	5/8"	HMIW 01S	HMIF 01S	3/4"
2C x 6	14.0	5/8"	3/4"	-	-	5/8"	3/4"	HMIW 01S	HMIF 01S	3/4"
2C x 10	16.0	3/4"	3/4"	-	-	3/4"	3/4"	HMIW 01	HMIF 01	3/4"
2C x 16	17.0	7/8"	3/4"	-	-	3/4"	3/4"	HMIW 01	HMIF 01	3/4"
2C x 25	17.0	7/8"	3/4"	-	-	7/8"	3/4"	HMIW 01	HMIF 01	3/4"
2C x 35	19.0	7/8"	3/4"	-	-	1"	1"	HMIW 02	HMIF 02	1"
2C x 50	21.0	1"	1"	-	-	1"	1"	HMIW 03	HMIF 03	1"
2C x 70	23.0	1.1/8"	1.1/8"	-	-	1.1/8"	1.1/8"	HMIW 04	HMIF 04	1"
2C x 95	26.5	1.1/4"	1.1/4"	-	-	1.1/4"	1.1/4"	HMIW 05	HMIF 05	1.1/4"
2C x 120	28.5	1.1/4"	1.1/4"	-	-	1.3/8"	1.1/2"	HMIW 05	HMIF 05	1.1/4"
2C x 150	32.0	1.1/2"	1.1/2"	-	-	1.1/2"	1.1/2"	HMIW 06	HMIF 06	1.1/2"
2C x 185	35.5	1.1/2"	1.1/2"	-	-	1.3/4"	2"	HMIW 07	HMIF 07	1.1/2"
2C x 240	39.5	1.3/4"	1.3/4"	-	-	1.3/4"	2"	HMIW 08	HMIF 08	2"
2C x 300	43.5	2"	2"	-	-	2"	2"	HMIW 09	HMIF 09	2"
2C x 400	49.0	2.1/4"	2.1/4"	-	-	2.1/4"	2.1/4"	HMIW 010	HMIF 010	2"
2C x 500	55.5	2.1/2"	2.1/2"	-	-	2.1/2"	2.1/2"	HMIW 011	HMIF 011	2.1/2"
2C x 630	61.5	2.3/4"	2.3/4"	-	-	2.3/4"	2.3/4"	HMIW 012	HMIF 012	3"
XLPE Armoured Twin Core Power Cables Type A2XWY & 2XWY 650 / 1100 V										
2C x 4	15.5	3/4"	3/4"	5	5/8"	5/8"	3/4"	HMIW 01S	HMIF 01S	3/4"
2C x 6	16.5	3/4"	3/4"	5	5/8"	3/4"	3/4"	HMIW 01S	HMIF 01S	3/4"
2C x 10	18.0	7/8"	3/4"	4	3/4"	3/4"	3/4"	HMIW 01	HMIF 01	3/4"
2C x 16	19.0	7/8"	3/4"	4	3/4"	3/4"	3/4"	HMIW 01	HMIF 01	3/4"

Gland Selection Chart

Cable Description		Single Compression		Flange Type		Double Compression				
# of Cores x Cross Sec. Area	Approx. O.D. (mm)	Code	Entry Thread (BS Con)	Code	Entry Thread (BS Con)	D.C. Type Code	Entry Thread for D.C. Type (BS Con)	Weather Proof (WP) Code	Flame Proof (FLP) Code	Entry Thread for WP/FLP (BS Con)
XLPE Armoured Twin Core Power Cables Type A2XWY & 2XWY 650 / 1100 V										
2C x 25	20.0	7/8"	3/4"	3	3/4"	1"	1"	HMIW 02	HMIF 02	1"
2C x 35	22.0	1"	1"	2	1"	1"	1"	HMIW 03	HMIF 03	1"
2C x 50	24.0	1.1/8"	1.1/8"	2	1"	1.1/8"	1.1/8"	HMIW 04	HMIF 04	1"
2C x 70	27.0	1.1/8"	1.1/8"	1	1.1/4"	1.1/4"	1.1/4"	HMIW 05	HMIF 05	1.1/4"
2C x 95	30.5	1.3/8"	1.3/8"	1	1.1/4"	1.3/8"	1.1/2"	HMIW 06	HMIF 06	1.1/2"
2C x 120	33.0	1.3/8"	1.3/8"	11	1.1/4"	1.3/8"	1.1/2"	HMIW 06	HMIF 06	1.1/2"
2C x 150	36.0	1.1/2"	1.1/2"	0	1.1/2"	1.1/2"	1.1/2"	HMIW 07	HMIF 07	1.1/2"
2C x 185	40.0	1.3/4"	1.3/4"	38	M40	1.3/4"	2"	HMIW 08	HMIF 08	2"
2C x 240	45.0	2"	2"	001	1.3/4"	2"	2"	HMIW 09	HMIF 09	2"
2C x 300	49.0	2"	2"	002	2.1/8"	2.1/4"	2.1/4"	HMIW 010	HMIF 010	2"
2C x 400	54.5	2.1/4"	2.1/4"	003	2.1/4"	2.1/2"	2.1/2"	HMIW 011	HMIF 011	2.1/2"
2C x 500	61.5	2.3/4"	2.3/4"	0033	2.1/2"	2.3/4"	2.3/4"	HMIW 012	HMIF 012	3"
2C x 630	67.5	2.3/4"	2.3/4"	004	3"	2.3/4"	2.3/4"	HMIW 013S	HMIF 013S	3"
XLPE Armoured Twin Core Power Cables Type A2XFY & 2XFY 650 / 1100 V										
2C x 25	18.5	7/8"	3/4"	4	3/4"	7/8"	3/4"	HMIW 01	HMIF 01	3/4"
2C x 35	20.0	7/8"	3/4"	3	3/4"	1"	1"	HMIW 02	HMIF 02	1"
2C x 50	22.5	1"	1"	2	1"	1"	1"	HMIW 03	HMIF 03	1"
2C x 70	25.5	1.1/8"	1.1/8"	2	1"	1.1/8"	1.1/8"	HMIW 04	HMIF 04	1"
2C x 95	28.0	1.1/4"	1.1/4"	1	1.1/4"	1.1/4"	1.1/4"	HMIW 05	HMIF 05	1.1/4"
2C x 120	30.5	1.3/8"	1.3/8"	1	1.1/4"	1.3/8"	1.1/2"	HMIW 06	HMIF 06	1.1/2"
2C x 150	34.0	1.1/2"	1.1/2"	0	1.1/2"	1.1/2"	1.1/2"	HMIW 07	HMIF 07	1.1/2"
2C x 185	37.0	1.1/2"	1.1/2"	0	1.1/2"	1.3/4"	2"	HMIW 07	HMIF 07	1.1/2"
2C x 240	41.0	1.3/4"	1.3/4"	38	M40	1.3/4"	2"	HMIW 08	HMIF 08	2"
2C x 300	45.5	2"	2"	001	1.3/4"	2"	2"	HMIW 09	HMIF 09	2"
2C x 400	51.0	2.1/4"	2.1/4"	002	2.1/8"	2.1/4"	2.1/4"	HMIW 010	HMIF 010	2"
2C x 500	56.5	2.1/2"	2.1/2"	003	2.1/4"	2.1/2"	2.1/2"	HMIW 011	HMIF 011	2.1/2"
2C x 630	62.5	2.3/4"	2.3/4"	0033	2.1/2"	2.3/4"	2.3/4"	HMIW 012	HMIF 012	3"
XLPE Unarmoured Three Core Power Cables Type A2XY & 2XY 650 / 1100 V										
3C x 4	15.5	3/4"	3/4"	-	-	3/4"	3/4"	HMIW 015	HMIF 015	3/4"
3C x 6	16.0	3/4"	3/4"	-	-	3/4"	3/4"	HMIW 01	HMIF 01	3/4"
3C x 10	18.0	7/8"	3/4"	-	-	7/8"	3/4"	HMIW 02	HMIF 02	1"
3C x 16	18.0	7/8"	3/4"	-	-	7/8"	3/4"	HMIW 02	HMIF 02	1"
3C x 25	20.0	1"	1"	-	-	1"	1"	HMIW 03	HMIF 03	1"
3C x 35	21.5	1"	1"	-	-	1"	1"	HMIW 03	HMIF 03	1"
3C x 50	24.5	1.1/8"	1.1/8"	-	-	1.1/8"	1.1/8"	HMIW 04	HMIF 04	1"
3C x 70	29.0	1.1/4"	1.1/4"	-	-	1.3/8"	1.1/2"	HMIW 06	HMIF 06	1.1/2"
3C x 95	32.5	1.1/2"	1.1/2"	-	-	1.1/2"	1.1/2"	HMIW 07	HMIF 07	1.1/2"
3C x 120	34.5	1.1/2"	1.1/2"	-	-	1.1/2"	1.1/2"	HMIW 07	HMIF 07	1.1/2"
3C x 150	38.5	1.3/4"	1.3/4"	-	-	1.3/4"	2"	HMIW 08	HMIF 08	2"
3C x 185	43.5	2"	2"	-	-	2"	2"	HMIW 09	HMIF 09	2"

Gland Selection Chart

Cable Description		Single Compression		Flange Type		Double Compression				
# of Cores x Cross Sec. Area	Approx. O.D. (mm)	Code	Entry Thread (BS Con)	Code	Entry Thread (BS Con)	D.C. Type Code	Entry Thread for D.C. Type (BS Con)	Weather Proof (WP) Code	Flame Proof (FLP) Code	Entry Thread for WP/FLP (BS Con)
XLPE Unarmoured Three Core Power Cables Type A2XY & 2XY 650 / 1100 V										
3C x 240	48.5	2"	2"	-	-	2.1/4"	2.1/4"	HMIW 010	HMIF 010	2"
3C x 300	51.5	2.1/4"	2.1/4"	-	-	2.1/4"	2.1/4"	HMIW 011S	HMIF 011S	2.1/2"
3C x 400	59.5	2.3/4"	2.3/4"	-	-	2.3/4"	2.3/4"	HMIW 012	HMIF 012	3"
3C x 500	66.0	2.3/4"	2.3/4"	-	-	3"	3"	HMIW 013S	HMIF 013S	3"
3C x 630	72.0	3"	3"	-	-	3.1/4"	3.1/4"	HMIW 013	HMIF 013	3.1/4"
XLPE Armoured Three Core Power Cables Type A2XWY & 2XWY 650 / 1100 V										
3C x 4	16.0	3/4"	3/4"	5	5/8"	5/8"	3/4"	HMIW 01S	HMIF 01S	3/4"
3C x 6	17.0	3/4"	3/4"	4	3/4"	3/4"	3/4"	HMIW 01	HMIF 01	3/4"
3C x 10	19.0	7/8"	3/4"	4	3/4"	7/8"	3/4"	HMIW 02	HMIF 02	1"
3C x 16	21.0	1"	1"	3	3/4"	1"	1"	HMIW 03	HMIF 03	1"
3C x 25	23.0	1"	1"	2	1"	1"	1"	HMIW 03	HMIF 03	1"
3C x 35	25.5	1.1/8"	1.1/8"	2	1"	1.1/8"	1.1/8"	HMIW 04	HMIF 04	1"
3C x 50	27.5	1.1/4"	1.1/4"	1	1.1/4"	1.1/4"	1.1/4"	HMIW 05	HMIF 05	1.1/4"
3C x 70	32.0	1.3/8"	1.3/8"	11	1.1/4"	1.3/8"	1.1/2"	HMIW 06	HMIF 06	1.1/2"
3C x 95	37.5	1.1/2"	1.1/2"	0	1.1/2"	1.3/4"	2"	HMIW 08	HMIF 08	2"
3C x 120	39.5	1.3/4"	1.3/4"	38	M40	1.3/4"	2"	HMIW 08	HMIF 08	2"
3C x 150	43.5	2"	2"	001	1.3/4"	2"	2"	HMIW 09	HMIF 09	2"
3C x 185	48.5	2"	2"	002	2.1/8"	2.1/4"	2.1/4"	HMIW 010	HMIF 010	2"
3C x 240	53.0	2.1/4"	2.1/4"	003	2.1/4"	2.1/4"	2.1/4"	HMIW 011S	HMIF 011S	2.1/2"
3C x 300	57.5	2.1/2"	2.1/2"	003	2.1/4"	2.1/2"	2.1/2"	HMIW 011	HMIF 011	2.1/2"
3C x 400	65.0	2.3/4"	2.3/4"	004	3"	2.3/4"	2.3/4"	HMIW 012	HMIF 012	3"
3C x 500	73.0	3"	3"	004	3"	3.1/4"	3.1/4"	HMIW 013	HMIF 013	3.1/4"
3C x 630	78.0	3.1/4"	3.1/4"	005	3.3/8"	3.1/2"	3.1/2"	HMIW 013	HMIF 013	3.1/4"
XLPE Armoured Three Core Power Cables Type A2XFY & 2XFY 650 / 1100 V										
3C x 16	18.5	7/8"	3/4"	4	3/4"	7/8"	3/4"	HMIW 01	HMIF 01	3/4"
3C x 25	20.5	1"	1"	3	3/4"	1"	1"	HMIW 03	HMIF 03	1"
3C x 35	23.0	1"	1"	2	1"	1"	1"	HMIW 03	HMIF 03	1"
3C x 50	25.5	1.1/8"	1.1/8"	2	1"	1.1/8"	1.1/8"	HMIW 04	HMIF 04	1"
3C x 70	30.0	1.1/4"	1.1/4"	1	1.1/4"	1.1/4"	1.1/4"	HMIW 05	HMIF 05	1.1/4"
3C x 95	33.5	1.1/2"	1.1/2"	0	1.1/2"	1.1/2"	1.1/2"	HMIW 06	HMIF 06	1.1/2"
3C x 120	35.5	1.1/2"	1.1/2"	0	1.1/2"	1.1/2"	1.1/2"	HMIW 07	HMIF 07	1.1/2"
3C x 150	40.5	1.3/4"	1.3/4"	38	M40	1.3/4"	2"	HMIW 08	HMIF 08	2"
3C x 185	44.5	2"	2"	001	1.3/4"	2"	2"	HMIW 09	HMIF 09	2"
3C x 240	49.0	2"	2"	002	2.1/8"	2.1/4"	2.1/4"	HMIW 010	HMIF 010	2"
3C x 300	53.0	2.1/4"	2.1/4"	003	2.1/4"	2.1/4"	2.1/4"	HMIW 011S	HMIF 011S	2.1/2"
3C x 400	58.5	2.1/2"	2.1/2"	003	2.1/4"	2.1/2"	2.1/2"	HMIW 011	HMIF 011	2.1/2"
3C x 500	67.0	2.3/4"	2.3/4"	004	3"	2.3/4"	2.3/4"	HMIW 013S	HMIF 013S	3"
3C x 630	73.0	3"	3"	004	3"	3.1/4"	3.1/4"	HMIW 013	HMIF 013	3.1/4"
XLPE Unarmoured Three & Half Core Power Cables Type A2XY & 2XY 650 / 1100 V										
3.5C x 25/16	22.0	1"	1"	-	-	1"	1"	HMIW 03	HMIF 03	1"

Gland Selection Chart

Cable Description		Single Compression		Flange Type		Double Compression				
# of Cores x Cross Sec. Area	Approx. O.D. (mm)	Code	Entry Thread (BS Con)	Code	Entry Thread (BS Con)	D.C. Type Code	Entry Thread for D.C. Type (BS Con)	Weather Proof (WP) Code	Flame Proof (FLP) Code	Entry Thread for WP/FLP (BS Con)
XLPE Unarmoured Three & Half Core Power Cables Type A2XY & 2XY 650 / 1100 V										
3.5C x 35/16	24.0	1.1/8"	1.1/8"	-	-	1.1/8"	1.1/8"	HMIW 04	HMIF 04	1"
3.5C x 50/25	27.5	1.1/4"	1.1/4"	-	-	1.1/4"	1.1/4"	HMIW 05	HMIF 05	1.1/4"
3.5C x 70/35	31.0	1.3/8"	1.3/8"	-	-	1.3/8"	1.1/2"	HMIW 06	HMIF 06	1.1/2"
3.5C x 95/50	35.0	1.1/2"	1.1/2"	-	-	1.1/2"	1.1/2"	HMIW 07	HMIF 07	1.1/2"
3.5C x 120/70	39.0	1.3/4"	1.3/4"	-	-	1.3/4"	2"	HMIW 08	HMIF 08	2"
3.5C x 150/70	43.0	2"	2"	-	-	2"	2"	HMIW 09	HMIF 09	2"
3.5C x 185/95	48.0	2"	2"	-	-	2.1/4"	2.1/4"	HMIW 010	HMIF 010	2"
3.5C x 240/120	54.0	2.1/4"	2.1/4"	-	-	2.1/2"	2.1/2"	HMIW 011	HMIF 011	2.1/2"
3.5C x 300/150	57.0	2.1/2"	2.1/2"	-	-	2.1/2"	2.1/2"	HMIW 011	HMIF 011	2.1/2"
3.5C x 400/185	65.0	2.3/4"	2.3/4"	-	-	2.3/4"	2.3/4"	HMIW 013S	HMIF 013S	3"
3.5C x 500/240	72.5	3.1/4"	3.1/4"	-	-	3.1/4"	3.1/4"	HMIW 013	HMIF 013	3.1/4"
XLPE Armoured Three & Half Core Power Cables Type A2XWY & 2XWY 650 / 1100 V										
3.5C x 25/16	25.5	1.1/8"	1.1/8"	2	1"	1.1/8"	1.1/8"	HMIW 04	HMIF 04	1"
3.5C x 35/16	26.5	1.1/8"	1.1/8"	2	1"	1.1/4"	1.1/4"	HMIW 05	HMIF 05	1.1/4"
3.5C x 50/25	29.5	1.1/4"	1.1/4"	1	1.1/4"	1.1/4"	1.1/4"	HMIW 05	HMIF 05	1.1/4"
3.5C x 70/35	34.0	1.1/2"	1.1/2"	0	1.1/2"	1.1/2"	1.1/2"	HMIW 07	HMIF 07	1.1/2"
3.5C x 95/50	38.0	1.1/2"	1.1/2"	00	1.1/2"	1.3/4"	2"	HMIW 08	HMIF 08	2"
3.5C x 120/70	41.0	1.3/4"	1.3/4"	38	M40	1.3/4"	2"	HMIW 08	HMIF 08	2"
3.5C x 150/70	45.0	2"	2"	001	1.3/4"	2"	2"	HMIW 09	HMIF 09	2"
3.5C x 185/95	50.0	2"	2"	002	2.1/8"	2.1/4"	2.1/4"	HMIW 010	HMIF 010	2"
3.5C x 240/120	56.0	2.1/4"	2.1/4"	003	2.1/4"	2.1/2"	2.1/2"	HMIW 011	HMIF 011	2.1/2"
3.5C x 300/150	61.0	2.3/4"	2.3/4"	0033	2.1/2"	2.3/4"	2.3/4"	HMIW 012	HMIF 012	3"
3.5C x 400/185	70.0	3"	3"	004	3"	3"	3"	HMIW 013S	HMIF 013S	3"
3.5C x 500/240	77.0	3.1/4"	3.1/4"	005	3.3/8"	3.1/4"	3.1/4"	HMIW 013	HMIF 013	3.1/4"
XLPE Armoured Three & Half Core Power Cables Type A2XFY & 2XFY 650 / 1100 V										
3.5C x 25/16	23.0	1"	1"	2	1"	1"	1"	HMIW 03	HMIF 03	1"
3.5C x 35/16	25.0	1.1/8"	1.1/8"	2	1"	1.1/8"	1.1/8"	HMIW 04	HMIF 04	1"
3.5C x 50/25	28.0	1.1/4"	1.1/4"	1	1.1/4"	1.1/4"	1.1/4"	HMIW 05	HMIF 05	1.1/4"
3.5C x 70/35	32.0	1.3/8"	1.3/8"	11	1.1/4"	1.3/8"	1.1/2"	HMIW 06	HMIF 06	1.1/2"
3.5C x 95/50	36.0	1.1/2"	1.1/2"	0	1.1/2"	1.1/2"	1.1/2"	HMIW 07	HMIF 07	1.1/2"
3.5C x 120/70	40.0	1.3/4"	1.3/4"	38	M40	1.3/4"	2"	HMIW 08	HMIF 08	2"
3.5C x 150/70	44.0	2"	2"	001	1.3/4"	2"	2"	HMIW 09	HMIF 09	2"
3.5C x 185/95	50.0	2"	2"	002	2.1/8"	2.1/4"	2.1/4"	HMIW 010	HMIF 010	2"
3.5C x 240/120	55.0	2.1/4"	2.1/4"	003	2.1/4"	2.1/2"	2.1/2"	HMIW 011	HMIF 011	2.1/2"
3.5C x 300/150	58.0	2.1/2"	2.1/2"	003	2.1/4"	2.1/2"	2.1/2"	HMIW 011	HMIF 011	2.1/2"
3.5C x 400/185	66.0	2.3/4"	2.3/4"	004	3"	2.3/4"	2.3/4"	HMIW 012	HMIF 012	3"
3.5C x 500/240	73.5	3"	3"	004	3"	3.1/4"	3.1/4"	HMIW 013	HMIF 013	3.1/4"
XLPE Unarmoured Four Core Power Cables Type A2XY & 2XY 650 / 1100 V										
4C x 4	16.0	3/4"	3/4"	-	-	3/4"	3/4"	HMIW 01	HMIF 01	3/4"
4C x 6	17.5	7/8"	3/4"	-	-	7/8"	3/4"	HMIW 01	HMIF 01	3/4"

Gland Selection Chart

Cable Description		Single Compression		Flange Type		Double Compression				
# of Cores x Cross Sec. Area	Approx. O.D. (mm)	Code	Entry Thread (BS Con)	Code	Entry Thread (BS Con)	D.C. Type Code	Entry Thread for D.C. Type (BS Con)	Weather Proof (WP) Code	Flame Proof (FLP) Code	Entry Thread for WP/FLP (BS Con)
XLPE Unarmoured Four Core Power Cables Type A2XY & 2XY 650 / 1100 V										
4C x 10	18.5	7/8"	3/4"	-	-	1"	1"	HMIW 02	HMIF 02	1"
4C x 16	20.0	1"	1"	-	-	1"	1"	HMIW 02	HMIF 02	1"
4C x 25	21.0	1"	1"	-	-	1"	1"	HMIW 03	HMIF 03	1"
4C x 35	23.5	1.1/8"	1.1/8"	-	-	1.1/8"	1.1/8"	HMIW 04	HMIF 04	1"
4C x 50	26.0	1.1/8"	1.1/8"	-	-	1.1/4"	1.1/4"	HMIW 05	HMIF 05	1.1/4"
4C x 70	30.5	1.3/8"	1.3/8"	-	-	1.3/8"	1.1/2"	HMIW 06	HMIF 06	1.1/2"
4C x 95	33.5	1.1/2"	1.1/2"	-	-	1.1/2"	1.1/2"	HMIW 07	HMIF 07	1.1/2"
4C x 120	37.5	1.3/4"	1.3/4"	-	-	1.3/4"	2"	HMIW 08	HMIF 08	2"
4C x 150	42.0	1.3/4"	1.3/4"	-	-	2"	2"	HMIW 09	HMIF 09	2"
4C x 185	46.5	2"	2"	-	-	2"	2"	HMIW 010	HMIF 010	2"
4C x 240	52.5	2.1/4"	2.1/4"	-	-	2.1/4"	2.1/4"	HMIW 011S	HMIF 011S	2.1/2"
4C x 300	58.0	2.1/2"	2.1/2"	-	-	2.1/2"	2.1/2"	HMIW 011	HMIF 011	2.1/2"
4C x 400	65.5	2.3/4"	2.3/4"	-	-	2.3/4"	2.3/4"	HMIW 013S	HMIF 013S	3"
XLPE Armoured Four Core Power Cables Type A2XWY & 2XWY 650 / 1100 V										
4C x 4	17.5	3/4"	3/4"	4	3/4"	3/4"	3/4"	HMIW 01	HMIF 01	3/4"
4C x 6	18.5	7/8"	3/4"	4	3/4"	7/8"	3/4"	HMIW 01	HMIF 01	3/4"
4C x 10	20.5	1"	1"	3	3/4"	1"	1"	HMIW 03	HMIF 03	1"
4C x 16	21.0	1"	1"	3	3/4"	1"	1"	HMIW 03	HMIF 03	1"
4C x 25	25.0	1.1/8"	1.1/8"	2	1"	1.1/8"	1.1/8"	HMIW 04	HMIF 04	1"
4C x 35	26.5	1.1/8"	1.1/8"	2	1"	1.1/4"	1.1/4"	HMIW 05	HMIF 05	1.1/4"
4C x 50	29.5	1.1/4"	1.1/4"	1	1.1/4"	1.1/4"	1.1/4"	HMIW 05	HMIF 05	1.1/4"
4C x 70	34.0	1.1/2"	1.1/2"	0	1.1/2"	1.1/2"	1.1/2"	HMIW 07	HMIF 07	1.1/2"
4C x 95	38.0	1.1/2"	1.1/2"	00	1.1/2"	1.3/4"	2"	HMIW 08	HMIF 08	2"
4C x 120	42.0	1.3/4"	1.3/4"	001	1.3/4"	1.3/4"	2"	HMIW 08	HMIF 08	2"
4C x 150	47.0	2"	2"	002	2.1/8"	2"	2"	HMIW 010	HMIF 010	2"
4C x 185	52.0	2.1/4"	2.1/4"	002	2.1/8"	2.1/4"	2.1/4"	HMIW 010	HMIF 010	2"
4C x 240	57.5	2.1/2"	2.1/2"	003	2.1/4"	2.1/2"	2.1/2"	HMIW 011	HMIF 011	2.1/2"
4C x 300	64.5	2.3/4"	2.3/4"	0033	2.1/2"	2.3/4"	2.3/4"	HMIW 012	HMIF 012	3"
4C x 400	71.5	3"	3"	004	3"	3"	3"	HMIW 013S	HMIF 013S	3"
XLPE Armoured Four Core Power Cables Type A2XFY & 2XFY 650 / 1100 V										
4C x 16	20.0	7/8"	3/4"	3	3/4"	1"	1"	HMIW 02	HMIF 02	1"
4C x 25	23.0	1"	1"	2	1"	1"	1"	HMIW 03	HMIF 03	1"
4C x 35	25.0	1.1/8"	1.1/8"	2	1"	1.1/8"	1.1/8"	HMIW 04	HMIF 04	1"
4C x 50	28.0	1.1/4"	1.1/4"	1	1.1/4"	1.1/4"	1.1/4"	HMIW 05	HMIF 05	1.1/4"
4C x 70	32.0	1.3/8"	1.3/8"	11	1.1/4"	1.3/8"	1.1/2"	HMIW 06	HMIF 06	1.1/2"
4C x 95	35.0	1.1/2"	1.1/2"	0	1.1/2"	1.1/2"	1.1/2"	HMIW 07	HMIF 07	1.1/2"
4C x 120	39.0	1.3/4"	1.3/4"	38	M40	1.3/4"	2"	HMIW 08	HMIF 08	2"
4C x 150	43.5	2"	2"	001	1.3/4"	2"	2"	HMIW 09	HMIF 09	2"
4C x 185	48.0	2"	2"	002	2.1/8"	2.1/4"	2.1/4"	HMIW 010	HMIF 010	2"
4C x 240	54.0	2.1/4"	2.1/4"	003	2.1/4"	2.1/2"	2.1/2"	HMIW 011S	HMIF 011S	2.1/2"

Gland Selection Chart

Cable Description		Single Compression		Flange Type		Double Compression				
# of Cores x Cross Sec. Area	Approx. O.D. (mm)	Code	Entry Thread (BS Con)	Code	Entry Thread (BS Con)	D.C. Type Code	Entry Thread for D.C. Type (BS Con)	Weather Proof (WP) Code	Flame Proof (FLP) Code	Entry Thread for WP/FLP (BS Con)
XLPE Armoured Four Core Power Cables Type A2XFY & 2XFY 650 / 1100 V										
4C x 300	59.5	2.1/2"	2.1/2"	0033	2.1/2"	2.1/2"	2.1/2"	HMIW 011	HMIF 011	2.1/2"
4C x 400	66.5	2.3/4"	2.3/4"	004	3"	2.3/4"	2.3/4"	HMIW 013S	HMIF 013S	3"
XLPE Unarmoured Multi Core Control Cables Type 2XY 650 / 1100 V										
2C x 1.5	10.0	3/8"	5/8"	-	-	1/2"	5/8"	HMIW 01SS	HMIF 01SS	3/4"
3C x 1.5	10.5	3/8"	5/8"	-	-	1/2"	5/8"	HMIW 01SS	HMIF 01SS	3/4"
4C x 1.5	11.5	1/2"	5/8"	-	-	1/2"	5/8"	HMIW 01SS	HMIF 01SS	3/4"
5C x 1.5	12.5	1/2"	5/8"	-	-	1/2"	5/8"	HMIW 01S	HMIF 01S	3/4"
6C x 1.5	13.5	1/2"	5/8"	-	-	1/2"	5/8"	HMIW 01S	HMIF 01S	3/4"
7C x 1.5	13.5	1/2"	5/8"	-	-	1/2"	5/8"	HMIW 01S	HMIF 01S	3/4"
8C x 1.5	14.5	3/4"	3/4"	-	-	5/8"	3/4"	HMIW 01S	HMIF 01S	3/4"
9C x 1.5	15.5	3/4"	3/4"	-	-	3/4"	3/4"	HMIW 01S	HMIF 01S	3/4"
10C x 1.5	17.0	7/8"	3/4"	-	-	7/8"	3/4"	HMIW 01	HMIF 01	3/4"
12C x 1.5	17.5	7/8"	3/4"	-	-	7/8"	3/4"	HMIW 01	HMIF 01	3/4"
14C x 1.5	18.0	7/8"	3/4"	-	-	7/8"	3/4"	HMIW 02	HMIF 02	1"
16C x 1.5	18.5	7/8"	3/4"	-	-	1"	1"	HMIW 02	HMIF 02	1"
19C x 1.5	19.5	1"	1"	-	-	1"	1"	HMIW 03	HMIF 03	1"
21C x 1.5	20.5	1"	1"	-	-	1"	1"	HMIW 03	HMIF 03	1"
24C x 1.5	22.5	1"	1"	-	-	1.1/8"	1.1/8"	HMIW 04	HMIF 04	1"
27C x 1.5	23.0	1.1/8"	1.1/8"	-	-	1.1/8"	1.1/8"	HMIW 04	HMIF 04	1"
30C x 1.5	23.5	1.1/8"	1.1/8"	-	-	1.1/8"	1.1/8"	HMIW 04	HMIF 04	1"
33C x 1.5	24.0	1.1/8"	1.1/8"	-	-	1.1/8"	1.1/8"	HMIW 04	HMIF 04	1"
37C x 1.5	25.0	1.1/8"	1.1/8"	-	-	1.1/4"	1.1/4"	HMIW 04	HMIF 04	1"
44C x 1.5	28.0	1.1/4"	1.1/4"	-	-	1.1/4"	1.1/4"	HMIW 05	HMIF 05	1.1/4"
52C x 1.5	29.0	1.1/4"	1.1/4"	-	-	1.3/8"	1.1/2"	HMIW 06	HMIF 06	1.1/2"
61C x 1.5	31.0	1.3/8"	1.3/8"	-	-	1.3/8"	1.1/2"	HMIW 06	HMIF 06	1.1/2"
2C x 2.5	11.5	1/2"	5/8"	-	-	1/2"	5/8"	HMIW 01SS	HMIF 01SS	3/4"
3C x 2.5	12.0	1/2"	5/8"	-	-	1/2"	5/8"	HMIW 01S	HMIF 01S	3/4"
4C x 2.5	13.0	1/2"	5/8"	-	-	1/2"	5/8"	HMIW 01S	HMIF 01S	3/4"
5C x 2.5	14.0	5/8"	3/4"	-	-	5/8"	3/4"	HMIW 01S	HMIF 01S	3/4"
6C x 2.5	15.0	3/4"	3/4"	-	-	3/4"	3/4"	HMIW 01S	HMIF 01S	3/4"
7C x 2.5	15.0	3/4"	3/4"	-	-	3/4"	3/4"	HMIW 01S	HMIF 01S	3/4"
8C x 2.5	16.0	3/4"	3/4"	-	-	3/4"	3/4"	HMIW 01	HMIF 01	3/4"
9C x 2.5	16.5	3/4"	3/4"	-	-	3/4"	3/4"	HMIW 01	HMIF 01	3/4"
10C x 2.5	17.5	7/8"	3/4"	-	-	7/8"	3/4"	HMIW 01	HMIF 01	3/4"
12C x 2.5	18.0	7/8"	3/4"	-	-	7/8"	3/4"	HMIW 02	HMIF 02	1"
14C x 2.5	19.0	7/8"	3/4"	-	-	1"	1"	HMIW 02	HMIF 02	1"
16C x 2.5	20.5	1"	1"	-	-	1"	1"	HMIW 03	HMIF 03	1"
19C x 2.5	21.5	1"	1"	-	-	1"	1"	HMIW 03	HMIF 03	1"
21C x 2.5	22.5	1"	1"	-	-	1.1/8"	1.1/8"	HMIW 04	HMIF 04	1"
24C x 2.5	24.5	1.1/8"	1.1/8"	-	-	1.1/8"	1.1/8"	HMIW 04	HMIF 04	1"

Gland Selection Chart

Cable Description		Single Compression		Flange Type		Double Compression				
# of Cores x Cross Sec. Area	Approx. O.D. (mm)	Code	Entry Thread (BS Con)	Code	Entry Thread (BS Con)	D.C. Type Code	Entry Thread for D.C. Type (BS Con)	Weather Proof (WP) Code	Flame Proof (FLP) Code	Entry Thread for WP/FLP (BS Con)
XLPE Unarmoured Multi Core Control Cables Type 2XY 650 / 1100 V										
27C x 2.5	25.5	1.1/8"	1.1/8"	-	-	1.1/4"	1.1/4"	HMIW 05	HMIF 05	1.1/4"
30C x 2.5	26.0	1.1/8"	1.1/8"	-	-	1.1/4"	1.1/4"	HMIW 05	HMIF 05	1.1/4"
33C x 2.5	27.0	1.1/4"	1.1/4"	-	-	1.1/4"	1.1/4"	HMIW 05	HMIF 05	1.1/4"
37C x 2.5	28.0	1.1/4"	1.1/4"	-	-	1.1/4"	1.1/4"	HMIW 05	HMIF 05	1.1/4"
44C x 2.5	32.0	1.1/2"	1.1/2"	-	-	1.1/2"	1.1/2"	HMIW 06	HMIF 06	1.1/2"
52C x 2.5	33.5	1.1/2"	1.1/2"	-	-	1.1/2"	1.1/2"	HMIW 07	HMIF 07	1.1/2"
61C x 2.5	35.0	1.1/2"	1.1/2"	-	-	1.1/2"	1.1/2"	HMIW 07	HMIF 07	1.1/2"
XLPE Armoured Multi Core Control Cables Type 2XWY 650 / 1100 V										
2C x 1.5	12.5	1/2"	5/8"	5	5/8"	1/2"	5/8"	HMIW 01SS	HMIF 01SS	3/4"
3C x 1.5	13.0	1/2"	5/8"	5	5/8"	1/2"	5/8"	HMIW 01S	HMIF 01S	3/4"
4C x 1.5	13.5	1/2"	5/8"	5	5/8"	1/2"	5/8"	HMIW 01S	HMIF 01S	3/4"
5C x 1.5	14.5	1/2"	5/8"	5	5/8"	1/2"	5/8"	HMIW 01S	HMIF 01S	3/4"
6C x 1.5	15.5	3/4"	3/4"	5	5/8"	5/8"	3/4"	HMIW 01S	HMIF 01S	3/4"
7C x 1.5	15.5	3/4"	3/4"	5	5/8"	5/8"	3/4"	HMIW 01S	HMIF 01S	3/4"
8C x 1.5	16.5	3/4"	3/4"	5	5/8"	3/4"	3/4"	HMIW 01S	HMIF 01S	3/4"
9C x 1.5	17.5	3/4"	3/4"	4	3/4"	3/4"	3/4"	HMIW 01	HMIF 01	3/4"
10C x 1.5	18.5	7/8"	3/4"	4	3/4"	7/8"	3/4"	HMIW 01	HMIF 01	3/4"
12C x 1.5	19.0	7/8"	3/4"	4	3/4"	7/8"	3/4"	HMIW 02	HMIF 02	1"
14C x 1.5	20.0	7/8"	3/4"	3	3/4"	1"	1"	HMIW 02	HMIF 02	1"
16C x 1.5	21.0	1"	1"	3	3/4"	1"	1"	HMIW 03	HMIF 03	1"
19C x 1.5	22.0	1"	1"	2	1"	1"	1"	HMIW 03	HMIF 03	1"
21C x 1.5	23.0	1"	1"	2	1"	1"	1"	HMIW 03	HMIF 03	1"
24C x 1.5	25.0	1.1/8"	1.1/8"	2	1"	1.1/8"	1.1/8"	HMIW 04	HMIF 04	1"
27C x 1.5	25.5	1.1/8"	1.1/8"	2	1"	1.1/8"	1.1/8"	HMIW 04	HMIF 04	1"
30C x 1.5	26.0	1.1/8"	1.1/8"	2	1"	1.1/8"	1.1/8"	HMIW 04	HMIF 04	1"
33C x 1.5	27.0	1.1/8"	1.1/8"	2	1"	1.1/4"	1.1/4"	HMIW 05	HMIF 05	1.1/4"
37C x 1.5	28.0	1.1/4"	1.1/4"	1	1.1/4"	1.1/4"	1.1/4"	HMIW 05	HMIF 05	1.1/4"
44C x 1.5	30.5	1.3/8"	1.3/8"	1	1.1/4"	1.3/8"	1.1/2"	HMIW 06	HMIF 06	1.1/2"
52C x 1.5	32.0	1.3/8"	1.3/8"	11	1.1/4"	1.3/8"	1.1/2"	HMIW 06	HMIF 06	1.1/2"
61C x 1.5	34.5	1.1/2"	1.1/2"	0	1.1/2"	1.1/2"	1.1/2"	HMIW 07	HMIF 07	1.1/2"
2C x 2.5	13.5	1/2"	5/8"	5	5/8"	1/2"	5/8"	HMIW 01S	HMIF 01S	3/4"
3C x 2.5	14.0	1/2"	5/8"	5	5/8"	1/2"	5/8"	HMIW 01S	HMIF 01S	3/4"
4C x 2.5	14.5	1/2"	5/8"	5	5/8"	1/2"	5/8"	HMIW 01S	HMIF 01S	3/4"
5C x 2.5	15.5	3/4"	3/4"	5	5/8"	5/8"	3/4"	HMIW 01S	HMIF 01S	3/4"
6C x 2.5	16.5	3/4"	3/4"	5	5/8"	3/4"	3/4"	HMIW 01S	HMIF 01S	3/4"
7C x 2.5	16.5	3/4"	3/4"	5	5/8"	3/4"	3/4"	HMIW 01S	HMIF 01S	3/4"
8C x 2.5	18.0	7/8"	3/4"	4	3/4"	3/4"	3/4"	HMIW 01	HMIF 01	3/4"
9C x 2.5	19.5	7/8"	3/4"	3	3/4"	1"	1"	HMIW 02	HMIF 02	1"
10C x 2.5	21.0	1"	1"	3	3/4"	1"	1"	HMIW 03	HMIF 03	1"
12C x 2.5	21.5	1"	1"	2	1"	1"	1"	HMIW 03	HMIF 03	1"

Gland Selection Chart

Cable Description		Single Compression		Flange Type		Double Compression				
# of Cores x Cross Sec. Area	Approx. O.D. (mm)	Code	Entry Thread (BS Con)	Code	Entry Thread (BS Con)	D.C. Type Code	Entry Thread for D.C. Type (BS Con)	Weather Proof (WP) Code	Flame Proof (FLP) Code	Entry Thread for WP/FLP (BS Con)
XLPE Armoured Multi Core Control Cables Type 2XWY 650 / 1100 V										
14C x 2.5	22.0	1"	1"	2	1"	1"	1"	HMIW 03	HMIF 03	1"
16C x 2.5	23.5	1.1/8"	1.1/8"	2	1"	1.1/8"	1.1/8"	HMIW 04	HMIF 04	1"
19C x 2.5	24.5	1.1/8"	1.1/8"	2	1"	1.1/8"	1.1/8"	HMIW 04	HMIF 04	1"
21C x 2.5	25.5	1.1/8"	1.1/8"	2	1"	1.1/8"	1.1/8"	HMIW 04	HMIF 04	1"
24C x 2.5	27.5	1.1/4"	1.1/4"	1	1.1/4"	1.1/4"	1.1/4"	HMIW 05	HMIF 05	1.1/4"
27C x 2.5	28.5	1.1/4"	1.1/4"	1	1.1/4"	1.1/4"	1.1/4"	HMIW 05	HMIF 05	1.1/4"
30C x 2.5	29.0	1.1/4"	1.1/4"	1	1.1/4"	1.1/4"	1.1/4"	HMIW 05	HMIF 05	1.1/4"
33C x 2.5	30.5	1.3/8"	1.3/8"	1	1.1/4"	1.3/8"	1.1/2"	HMIW 06	HMIF 06	1.1/2"
37C x 2.5	31.5	1.3/8"	1.3/8"	11	1.1/4"	1.3/8"	1.1/2"	HMIW 06	HMIF 06	1.1/2"
44C x 2.5	35.5	1.1/2"	1.1/2"	0	1.1/2"	1.1/2"	1.1/2"	HMIW 07	HMIF 07	1.1/2"
52C x 2.5	37.5	1.1/2"	1.1/2"	0	1.1/2"	1.3/4"	2"	HMIW 08	HMIF 08	2"
61C x 2.5	39.0	1.3/4"	1.3/4"	38	M40	1.3/4"	2"	HMIW 08	HMIF 08	2"
XLPE Armoured Multi Core Control Cables Type 2XFY 650 / 1100 V										
16C x 1.5	19.0	7/8"	3/4"	4	3/4"	7/8"	3/4"	HMIW 02	HMIF 02	1"
19C x 1.5	20.0	7/8"	3/4"	3	3/4"	1"	1"	HMIW 02	HMIF 02	1"
21C x 1.5	21.0	1"	1"	3	3/4"	1"	1"	HMIW 03	HMIF 03	1"
24C x 1.5	23.0	1"	1"	2	1"	1"	1"	HMIW 03	HMIF 03	1"
27C x 1.5	23.5	1.1/8"	1.1/8"	2	1"	1.1/8"	1.1/8"	HMIW 04	HMIF 04	1"
30C x 1.5	24.0	1.1/8"	1.1/8"	2	1"	1.1/8"	1.1/8"	HMIW 04	HMIF 04	1"
33C x 1.5	25.0	1.1/8"	1.1/8"	2	1"	1.1/8"	1.1/8"	HMIW 04	HMIF 04	1"
37C x 1.5	26.0	1.1/8"	1.1/8"	2	1"	1.1/8"	1.1/8"	HMIW 04	HMIF 04	1"
44C x 1.5	28.5	1.1/4"	1.1/4"	1	1.1/4"	1.1/4"	1.1/4"	HMIW 05	HMIF 05	1.1/4"
52C x 1.5	30.5	1.3/8"	1.3/8"	1	1.1/4"	1.3/8"	1.1/2"	HMIW 06	HMIF 06	1.1/2"
61C x 1.5	32.0	1.3/8"	1.3/8"	11	1.1/4"	1.3/8"	1.1/2"	HMIW 06	HMIF 06	1.1/2"
10C x 2.5	19.0	7/8"	3/4"	4	3/4"	7/8"	3/4"	HMIW 02	HMIF 02	1"
12C x 2.5	19.5	7/8"	3/4"	3	3/4"	1"	1"	HMIW 02	HMIF 02	1"
14C x 2.5	20.0	7/8"	3/4"	3	3/4"	1"	1"	HMIW 02	HMIF 02	1"
16C x 2.5	21.5	1"	1"	2	1"	1"	1"	HMIW 03	HMIF 03	1"
19C x 2.5	22.5	1"	1"	2	1"	1"	1"	HMIW 03	HMIF 03	1"
21C x 2.5	23.5	1.1/8"	1.1/8"	2	1"	1.1/8"	1.1/8"	HMIW 04	HMIF 04	1"
24C x 2.5	25.5	1.1/8"	1.1/8"	2	1"	1.1/8"	1.1/8"	HMIW 04	HMIF 04	1"
27C x 2.5	26.5	1.1/8"	1.1/8"	2	1"	1.1/4"	1.1/4"	HMIW 05	HMIF 05	1.1/4"
30C x 2.5	27.5	1.1/4"	1.1/4"	1	1.1/4"	1.1/4"	1.1/4"	HMIW 05	HMIF 05	1.1/4"
33C x 2.5	28.5	1.1/4"	1.1/4"	1	1.1/4"	1.1/4"	1.1/4"	HMIW 05	HMIF 05	1.1/4"
37C x 2.5	29.5	1.1/4"	1.1/4"	1	1.1/4"	1.1/4"	1.1/4"	HMIW 05	HMIF 05	1.1/4"
44C x 2.5	33.0	1.3/8"	1.3/8"	11	1.1/4"	1.3/8"	1.1/2"	HMIW 06	HMIF 06	1.1/2"
52C x 2.5	34.5	1.1/2"	1.1/2"	0	1.1/2"	1.1/2"	1.1/2"	HMIW 07	HMIF 07	1.1/2"
61C x 2.5	36.0	1.1/2"	1.1/2"	0	1.1/2"	1.1/2"	1.1/2"	HMIW 07	HMIF 07	1.1/2"
HT XLPE Armoured Single Core Power Cables Type A2XFY & 2XFY 3.8 / 6.6 kV (E)										
1C x 35	20.0	7/8"	3/4"	3	3/4"	1"	1"	HMIW 02	HMIF 02	1"

Gland Selection Chart

Cable Description		Single Compression		Flange Type		Double Compression				
# of Cores x Cross Sec. Area	Approx. O.D. (mm)	Code	Entry Thread (BS Con)	Code	Entry Thread (BS Con)	D.C. Type Code	Entry Thread for D.C. Type (BS Con)	Weather Proof (WP) Code	Flame Proof (FLP) Code	Entry Thread for WP/FLP (BS Con)
HT XLPE Armoured Single Core Power Cables Type A2XFY & 2XFY 3.8 / 6.6 kV (E)										
1C x 50	21.0	1"	1"	3	3/4"	1"	1"	HMIW 03	HMIF 03	1"
1C x 70	23.0	1"	1"	2	1"	1"	1"	HMIW 03	HMIF 03	1"
1C x 95	24.5	1.1/8"	1.1/8"	2	1"	1.1/8"	1.1/8"	HMIW 04	HMIF 04	1"
1C x 120	26.0	1.1/8"	1.1/8"	2	1"	1.1/8"	1.1/8"	HMIW 04	HMIF 04	1"
1C x 150	27.5	1.1/4"	1.1/4"	1	1.1/4"	1.1/4"	1.1/4"	HMIW 05	HMIF 05	1.1/4"
1C x 185	30.0	1.1/4"	1.1/4"	1	1.1/4"	1.1/4"	1.1/4"	HMIW 05	HMIF 05	1.1/4"
1C x 240	32.0	1.3/8"	1.3/8"	11	1.1/4"	1.3/8"	1.1/2"	HMIW 06	HMIF 06	1.1/2"
1C x 300	35.0	1.1/2"	1.1/2"	0	1.1/2"	1.1/2"	1.1/2"	HMIW 07	HMIF 07	1.1/2"
1C x 400	39.0	1.3/4"	1.3/4"	38	M40	1.3/4"	2"	HMIW 08	HMIF 08	2"
1C x 500	42.5	1.3/4"	1.3/4"	001	1.3/4"	1.3/4"	2"	HMIW 09	HMIF 09	2"
1C x 630	46.5	2"	2"	002	2.1/8"	2"	2"	HMIW 010	HMIF 010	2"
1C x 800	50.0	2"	2"	002	2.1/8"	2.1/4"	2.1/4"	HMIW 010	HMIF 010	2"
1C x 1000	55.5	2.1/4"	2.1/4"	003	2.1/4"	2.1/2"	2.1/2"	HMIW 011	HMIF 011	2.1/2"
HT XLPE Armoured Single Core Power Cables Type A2XFY & 2XFY 6.6 / 6.6 kV (UE)										
1C x 35	23.0	1"	1"	2	1"	1"	1"	HMIW 03	HMIF 03	1"
1C x 50	24.0	1.1/8"	1.1/8"	2	1"	1.1/8"	1.1/8"	HMIW 04	HMIF 04	1"
1C x 70	25.5	1.1/8"	1.1/8"	2	1"	1.1/8"	1.1/8"	HMIW 04	HMIF 04	1"
1C x 95	27.5	1.1/4"	1.1/4"	1	1.1/4"	1.1/4"	1.1/4"	HMIW 05	HMIF 05	1.1/4"
1C x 120	29.0	1.1/4"	1.1/4"	1	1.1/4"	1.1/4"	1.1/4"	HMIW 05	HMIF 05	1.1/4"
1C x 150	30.5	1.3/8"	1.3/8"	1	1.1/4"	1.3/8"	1.1/2"	HMIW 06	HMIF 06	1.1/2"
1C x 185	33.0	1.3/8"	1.3/8"	11	1.1/4"	1.3/8"	1.1/2"	HMIW 06	HMIF 06	1.1/2"
1C x 240	35.0	1.1/2"	1.1/2"	0	1.1/2"	1.1/2"	1.1/2"	HMIW 07	HMIF 07	1.1/2"
1C x 300	37.0	1.1/2"	1.1/2"	0	1.1/2"	1.3/4"	2"	HMIW 07	HMIF 07	1.1/2"
1C x 400	40.5	1.3/4"	1.3/4"	38	M40	1.3/4"	2"	HMIW 08	HMIF 08	2"
1C x 500	44.0	2"	2"	001	1.3/4"	2"	2"	HMIW 09	HMIF 09	2"
1C x 630	47.5	2"	2"	002	2.1/8"	2"	2"	HMIW 010	HMIF 010	2"
1C x 800	51.5	2.1/4"	2.1/4"	002	2.1/8"	2.1/4"	2.1/4"	HMIW 010	HMIF 010	2"
1C x 1000	56.5	2.1/2"	2.1/2"	003	2.1/4"	2.1/2"	2.1/2"	HMIW 011	HMIF 011	2.1/2"
HT XLPE Armoured Single Core Power Cables Type A2XFY 11 / 11 kV (UE)										
1C x 70	30.0	1.1/4"	1.1/4"	1	1.1/4"	1.1/4"	1.1/4"	HMIW 05	HMIF 05	1.1/4"
1C x 95	31.0	1.3/8"	1.3/8"	11	1.1/4"	1.3/8"	1.1/2"	HMIW 06	HMIF 06	1.1/2"
1C x 120	32.5	1.3/8"	1.3/8"	11	1.1/4"	1.3/8"	1.1/2"	HMIW 06	HMIF 06	1.1/2"
1C x 150	34.0	1.1/2"	1.1/2"	0	1.1/2"	1.1/2"	1.1/2"	HMIW 07	HMIF 07	1.1/2"
1C x 185	36.0	1.1/2"	1.1/2"	0	1.1/2"	1.1/2"	1.1/2"	HMIW 07	HMIF 07	1.1/2"
1C x 240	38.0	1.1/2"	1.1/2"	00	1.1/2"	1.3/4"	2"	HMIW 08	HMIF 08	2"
1C x 300	40.5	1.3/4"	1.3/4"	38	M40	1.3/4"	2"	HMIW 08	HMIF 08	2"
1C x 400	44.0	2"	2"	001	1.3/4"	2"	2"	HMIW 09	HMIF 09	2"
1C x 500	47.0	2"	2"	002	2.1/8"	2"	2"	HMIW 010	HMIF 010	2"
1C x 630	50.5	2.1/4"	2.1/4"	002	2.1/8"	2.1/4"	2.1/4"	HMIW 010	HMIF 010	2"
1C x 800	54.5	2.1/4"	2.1/4"	003	2.1/4"	2.1/2"	2.1/2"	HMIW 011	HMIF 011	2.1/2"

Gland Selection Chart

Cable Description		Single Compression		Flange Type		Double Compression				
# of Cores x Cross Sec. Area	Approx. O.D. (mm)	Code	Entry Thread (BS Con)	Code	Entry Thread (BS Con)	D.C. Type Code	Entry Thread for D.C. Type {BS Con}	Weather Proof (WP) Code	Flame Proof (FLP) Code	Entry Thread for WP/FLP {BS Con}
HT XLPE Armoured Single Core Power Cables Type A2XFY 11 / 11 kV (UE)										
1C x 1000	59.5	2.1/2"	2.1/2"	0033	2.1/2"	2.1/2"	2.1/2"	HMIW 012	HMIF 012	3"
HT XLPE Armoured Single Core Power Cables Type A2XFY & 2XFY 12.7 / 22 kV (E)										
1C x 95	33.0	1.3/8"	1.3/8"	11	1.1/4"	1.3/8"	1.1/2"	HMIW 06	HMIF 06	1.1/2"
1C x 120	35.0	1.1/2"	1.1/2"	0	1.1/2"	1.1/2"	1.1/2"	HMIW 07	HMIF 07	1.1/2"
1C x 150	36.0	1.1/2"	1.1/2"	0	1.1/2"	1.1/2"	1.1/2"	HMIW 07	HMIF 07	1.1/2"
1C x 185	38.0	1.1/2"	1.1/2"	00	1.1/2"	1.3/4"	2"	HMIW 08	HMIF 08	2"
1C x 240	40.5	1.3/4"	1.3/4"	38	M40	1.3/4"	2"	HMIW 08	HMIF 08	2"
1C x 300	43.0	1.3/4"	1.3/4"	001	1.3/4"	1.3/4"	2"	HMIW 09	HMIF 09	2"
1C x 400	47.0	2"	2"	002	2.1/8"	2"	2"	HMIW 010	HMIF 010	2"
1C x 500	50.0	2"	2"	002	2.1/8"	2.1/4"	2.1/4"	HMIW 010	HMIF 010	2"
1C x 630	54.0	2.1/4"	2.1/4"	003	2.1/4"	2.1/2"	2.1/2"	HMIW 011S	HMIF 011S	2.1/2"
1C x 800	58.0	2.1/2"	2.1/2"	003	2.1/4"	2.1/2"	2.1/2"	HMIW 011	HMIF 011	2.1/2"
1C x 1000	62.5	2.3/4"	2.3/4"	0033	2.1/2"	2.3/4"	2.3/4"	HMIW 012	HMIF 012	3"
HT XLPE Armoured Single Core Power Cables Type A2XFY 19 / 33 kV (E)										
1C x 95	38.5	1.3/4"	1.3/4"	00	1.1/2"	1.3/4"	2"	HMIW 08	HMIF 08	2"
1C x 120	40.5	1.3/4"	1.3/4"	38	M40	1.3/4"	2"	HMIW 08	HMIF 08	2"
1C x 150	41.0	1.3/4"	1.3/4"	38	M40	1.3/4"	2"	HMIW 08	HMIF 08	2"
1C x 185	43.5	2"	2"	001	1.3/4"	2"	2"	HMIW 09	HMIF 09	2"
1C x 240	46.0	2"	2"	002	2.1/8"	2"	2"	HMIW 09	HMIF 09	2"
1C x 300	48.0	2"	2"	002	2.1/8"	2.1/4"	2.1/4"	HMIW 010	HMIF 010	2"
1C x 400	51.5	2.1/4"	2.1/4"	002	2.1/8"	2.1/4"	2.1/4"	HMIW 010	HMIF 010	2"
1C x 500	55.0	2.1/4"	2.1/4"	003	2.1/4"	2.1/2"	2.1/2"	HMIW 011	HMIF 011	2.1/2"
1C x 630	59.0	2.1/2"	2.1/2"	003	2.1/4"	2.1/2"	2.1/2"	HMIW 011	HMIF 011	2.1/2"
1C x 800	63.0	2.3/4"	2.3/4"	0033	2.1/2"	2.3/4"	2.3/4"	HMIW 012	HMIF 012	3"
1C x 1000	67.5	2.3/4"	2.3/4"	004	3"	2.3/4"	2.3/4"	HMIW 013S	HMIF 013S	3"
HT XLPE Armoured Single Core Power Cables Type A2XFY 33 / 33 kV (UE)										
1C x 120	42.0	1.3/4"	1.3/4"	001	1.3/4"	1.3/4"	2"	HMIW 08	HMIF 08	2"
1C x 150	43.5	2"	2"	001	1.3/4"	2"	2"	HMIW 09	HMIF 09	2"
1C x 185	45.0	2"	2"	001	1.3/4"	2"	2"	HMIW 09	HMIF 09	2"
1C x 240	48.0	2"	2"	002	2.1/8"	2.1/4"	2.1/4"	HMIW 010	HMIF 010	2"
1C x 300	50.0	2"	2"	002	2.1/8"	2.1/4"	2.1/4"	HMIW 010	HMIF 010	2"
1C x 400	53.5	2.1/4"	2.1/4"	003	2.1/4"	2.1/4"	2.1/4"	HMIW 011S	HMIF 011S	2.1/2"
1C x 500	56.5	2.1/2"	2.1/2"	003	2.1/4"	2.1/2"	2.1/2"	HMIW 011	HMIF 011	2.1/2"
1C x 630	60.0	2.1/2"	2.1/2"	0033	2.1/2"	2.1/2"	2.1/2"	HMIW 011	HMIF 011	2.1/2"
1C x 800	64.0	2.3/4"	2.3/4"	004	3"	2.3/4"	2.3/4"	HMIW 012	HMIF 012	3"
1C x 1000	69.0	3"	3"	004	3"	3"	3"	HMIW 013S	HMIF 013S	3"
HT XLPE Armoured Three Core Power Cables Type A2XFY 1.9 / 3.3 kV (E), 3.3 / 3.3 kV (UE)										
3C x 35	37.0	1.1/2"	1.1/2"	0	1.1/2"	1.3/4"	2"	HMIW 07	HMIF 07	1.1/2"
3C x 50	39.5	1.3/4"	1.3/4"	38	M40	1.3/4"	2"	HMIW 08	HMIF 08	2"
3C x 70	43.0	1.3/4"	1.3/4"	001	1.3/4"	1.3/4"	2"	HMIW 09	HMIF 09	2"

Gland Selection Chart

Cable Description		Single Compression		Flange Type		Double Compression				
# of Cores x Cross Sec. Area	Approx. O.D. (mm)	Code	Entry Thread (BS Con)	Code	Entry Thread (BS Con)	D.C. Type Code	Entry Thread for D.C. Type (BS Con)	Weather Proof (WP) Code	Flame Proof (FLP) Code	Entry Thread for WP/FLP (BS Con)
HT XLPE Armoured Three Core Power Cables Type A2XFY 1.9 / 3.3 kV (E), 3.3 / 3.3 kV (UE)										
3C x 95	46.5	2"	2"	002	2.1/8"	2"	2"	HMIW 010	HMIF 010	2"
3C x 120	50.5	2.1/4"	2.1/4"	002	2.1/8"	2.1/4"	2.1/4"	HMIW 010	HMIF 010	2"
3C x 150	53.0	2.1/4"	2.1/4"	003	2.1/4"	2.1/4"	2.1/4"	HMIW 011S	HMIF 011S	2.1/2"
3C x 185	57.5	2.1/2"	2.1/2"	003	2.1/4"	2.1/2"	2.1/2"	HMIW 011	HMIF 011	2.1/2"
3C x 240	63.0	2.3/4"	2.3/4"	0033	2.1/2"	2.3/4"	2.3/4"	HMIW 012	HMIF 012	3"
3C x 300	68.0	2.3/4"	2.3/4"	004	3"	2.3/4"	2.3/4"	HMIW 013S	HMIF 013S	3"
3C x 400	74.5	3.1/4"	3.1/4"	005	3.3/8"	3.1/4"	3.1/4"	HMIW 013	HMIF 013	3.1/4"
HT XLPE Armoured Three Core Power Cables Type A2XFY 3.8 / 6.6 kV (E)										
3C x 35	40.0	1.3/4"	1.3/4"	38	M40	1.3/4"	2"	HMIW 08	HMIF 08	2"
3C x 50	42.5	1.3/4"	1.3/4"	001	1.3/4"	1.3/4"	2"	HMIW 09	HMIF 09	2"
3C x 70	46.0	2"	2"	002	2.1/8"	2"	2"	HMIW 09	HMIF 09	2"
3C x 95	49.5	2"	2"	002	2.1/8"	2.1/4"	2.1/4"	HMIW 010	HMIF 010	2"
3C x 120	54.0	2.1/4"	2.1/4"	003	2.1/4"	2.1/2"	2.1/2"	HMIW 011S	HMIF 011S	2.1/2"
3C x 150	56.5	2.1/2"	2.1/2"	003	2.1/4"	2.1/2"	2.1/2"	HMIW 011	HMIF 011	2.1/2"
3C x 185	60.5	2.3/4"	2.3/4"	0033	2.1/2"	2.3/4"	2.3/4"	HMIW 012	HMIF 012	3"
3C x 240	68.0	2.3/4"	2.3/4"	004	3"	2.3/4"	2.3/4"	HMIW 013S	HMIF 013S	3"
3C x 300	71.5	3"	3"	004	3"	3"	3"	HMIW 013S	HMIF 013S	3"
3C x 400	80.0	3.1/2"	3.1/2"	005	3.3/8"	3.1/2"	3.1/2"	HMIW 014	HMIF 014	3.1/2"
HT XLPE Armoured Three Core Power Cables Type A2XFY & 2XFY 6.35 / 11 kV (E), 6.6 kV (UE)										
3C x 35	44.0	2"	2"	001	1.3/4"	2"	2"	HMIW 09	HMIF 09	2"
3C x 50	46.5	2"	2"	002	2.1/8"	2"	2"	HMIW 010	HMIF 010	2"
3C x 70	50.5	2.1/4"	2.1/4"	002	2.1/8"	2.1/4"	2.1/4"	HMIW 010	HMIF 010	2"
3C x 95	54.5	2.1/4"	2.1/4"	003	2.1/4"	2.1/2"	2.1/2"	HMIW 011	HMIF 011	2.1/2"
3C x 120	58.5	2.1/2"	2.1/2"	003	2.1/4"	2.1/2"	2.1/2"	HMIW 011	HMIF 011	2.1/2"
3C x 150	61.0	2.3/4"	2.3/4"	0033	2.1/2"	2.3/4"	2.3/4"	HMIW 012	HMIF 012	3"
3C x 185	66.0	2.3/4"	2.3/4"	004	3"	2.3/4"	2.3/4"	HMIW 012	HMIF 012	3"
3C x 240	71.5	3"	3"	004	3"	3"	3"	HMIW 013S	HMIF 013S	3"
3C x 300	76.5	3.1/4"	3.1/4"	005	3.3/8"	3.1/4"	3.1/4"	HMIW 013	HMIF 013	3.1/4"
3C x 400	83.5	3.1/2"	3.1/2"	005	3.3/8"	3.1/2"	3.1/2"	HMIW 014	HMIF 014	3.1/2"
HT XLPE Armoured Three Core Power Cables Type A2XFY & 2XFY 11 / 11 kV (UE)										
3C x 70	59.5	2.1/2"	2.1/2"	0033	2.1/2"	2.1/2"	2.1/2"	HMIW 011	HMIF 011	2.1/2"
3C x 95	63.5	2.3/4"	2.3/4"	0033	2.1/2"	2.3/4"	2.3/4"	HMIW 012	HMIF 012	3"
3C x 120	67.5	2.3/4"	2.3/4"	004	3"	2.3/4"	2.3/4"	HMIW 013S	HMIF 013S	3"
3C x 150	70.5	3"	3"	004	3"	3"	3"	HMIW 013S	HMIF 013S	3"
3C x 185	74.5	3.1/4"	3.1/4"	005	3.3/8"	3.1/4"	3.1/4"	HMIW 013	HMIF 013	3.1/4"
3C x 240	80.0	3.1/2"	3.1/2"	005	3.3/8"	3.1/2"	3.1/2"	HMIW 014	HMIF 014	3.1/2"
3C x 300	85.5	4"	4"	005	3.3/8"	3.1/2"	3.1/2"	HMIW 015	HMIF 015	4"
3C x 400	92.0	4"	4"	-	-	4"	4"	HMIW 015	HMIF 015	4"
HT XLPE Armoured Three Core Power Cables Type A2XFY & 2XFY 12.7 / 22 kV (E)										
3C x 95	66.0	2.3/4"	2.3/4"	004	3"	2.3/4"	2.3/4"	HMIW 012	HMIF 012	3"

Gland Selection Chart

Cable Description		Single Compression		Flange Type		Double Compression				
# of Cores x Cross Sec. Area	Approx. O.D. (mm)	Code	Entry Thread (BS Con)	Code	Entry Thread (BS Con)	D.C. Type Code	Entry Thread for D.C. Type (BS Con)	Weather Proof (WP) Code	Flame Proof (FLP) Code	Entry Thread for WP/FLP (BS Con)
HT XLPE Armoured Three Core Power Cables Type A2XFY & 2XFY 12.7 / 22 kV (E)										
3C x 120	70.0	3"	3"	004	3"	3"	3"	HMIW 013S	HMIF 013S	3"
3C x 150	72.5	3"	3"	004	3"	3.1/4"	3.1/4"	HMIW 013	HMIF 013	3.1/4"
3C x 185	77.5	3.1/4"	3.1/4"	005	3.3/8"	3.1/2"	3.1/2"	HMIW 013	HMIF 013	3.1/4"
3C x 240	82.5	3.1/2"	3.1/2"	005	3.3/8"	3.1/2"	3.1/2"	HMIW 014	HMIF 014	3.1/2"
3C x 300	87.5	4"	4"	-	-	4"	4"	HMIW 015	HMIF 015	4"
3C x 400	94.5	4"	4"	-	-	4"	4"	HMIW 016	HMIF 016	4.1/2"
HT XLPE Armoured Three Core Power Cables Type A2XFY & 2XFY 19 / 33 kV (E)										
3C x 95	79.0	3.1/4"	3.1/4"	005	3.3/8"	3.1/2"	3.1/2"	HMIW 014	HMIF 014	3.1/2"
3C x 120	83.0	3.1/2"	3.1/2"	005	3.3/8"	3.1/2"	3.1/2"	HMIW 014	HMIF 014	3.1/2"
3C x 150	86.5	4"	4"	-	-	4"	4"	HMIW 015	HMIF 015	4"
3C x 185	90.5	4"	4"	-	-	4"	4"	HMIW 015	HMIF 015	4"
3C x 240	95.5	4"	4"	-	-	4"	4"	HMIW 016	HMIF 016	4.1/2"
3C x 300	100.5	4.1/2"	4.1/2"	-	-	4.1/2"	4.1/2"	HMIW 016	HMIF 016	4.1/2"
HT XLPE Armoured Three Core Power Cables Type A2XFY & 2XFY 33 / 33 kV (UE)										
3C x 120	88.5	4"	4"	-	-	4"	4"	HMIW 015	HMIF 015	4"
3C x 150	91.0	4"	4"	-	-	4"	4"	HMIW 015	HMIF 015	4"
3C x 185	95.5	4"	4"	-	-	4"	4"	HMIW 016	HMIF 016	4.1/2"
3C x 240	100.5	4.1/2"	4.1/2"	-	-	4.1/2"	4.1/2"	HMIW 016	HMIF 016	4.1/2"

Disclaimer:

All information provided in this catalog is strictly informative. We've done our best to provide correct & accurate data, however we're not responsible for any possible errors or omissions. Use of this information is entirely the responsibility of user. We reserve the right to make any technical changes without notice.